

INTRODUCING FlexLam

What is FlexLam?

FlexLam is a collection of decorative thermoplastic wall panels and ceiling tiles. Available in multiple sizes that offer design flexibility. FlexLam collections include Flat Sheets, 3D Wall Panels, Custom Digital Printing, Wainscoting and Ceiling Tiles. FlexLam can be used as flat panels in close to 50 different finishes, but are generally made with 3-dimensional patterns, making hundreds of pattern and finish combinations possible. The panels are lightweight, Class A fire-rated, and are impact, scratch, and abrasion resistant. They can be installed over most substrates and offer a great labor-saving, low

maintenance design solution. The BIO (built-in-overlap) allows for most pattern to have less visible seams.

Why choose FlexLam?

- Lightweight & flexible
- Easy to install
- Impact, abrasion, & chemical resistant properties
- Class A Fire Rated
- Hundreds of design combinations
- Custom options also available
- Economical packaged shipping to any job site
- Made in USA



Create Your Formula

FlexLam offers hundreds of design and finish combinations suitable for any environment. Here's how to create your formula for success.



STEP 1: Choose Any Pattern



STEP 2: Choose Any Finish



FLEXLAM

*Shown: Alphabet Soup
+ Winter White = PES48-ALSP-WW*

*See pages O-13~17 for patterns.
See pages O-6~7 for color chart.*



Flat Sheets *p. 0-4*
Non-textured 4' x 8' sheets available in 45+ finishes



MAX, LINEAR Collection & 3D Wall Panels *p. 0-8*
Textured 4' x 8' & 4' x 10' sheets available in 45+ finishes and 60+ styles



Custom Digital Printing *p. 0-28*
Custom images and logos printed directly onto FlexLam Flat Sheets & 3D Wall Panels



Wainscoting *p. 0-33*
30" - 32" x 48" panels available in 45+ finishes and 6 styles



Door Skins *p. 0-35*
48" x 84" adhesive backed panels available in 11 finishes



Ceiling Tiles *p. 8-22*
2' x 2' & 2' x 4' tiles available in 45+ finishes and 45+ styles

FlexLam FLAT SHEETS (NON-TEXTURED)

Sheet Size: 4' x 8'
Thickness: .030"

Features:

- Can be die cut to almost any shape needed (furniture parts, mouldings, tables, etc.)
- Can be bent to fit curved surfaces – from soft curves to column wraps
- Can be flat-laminated or profile-wrapped to various substrates
- Available in all FlexLam Finishes on p. O-6~7

Great for a variety of applications:

- Exhibits and displays
- Door and drawer fascias
- Store fixtures
- Cabinets, counters & shelving
- Moulding and framing
- Ceiling and wall panels
- RV/auto/marine

Part #	*Finish
	White (*WH)
	Argent Bronze (*AB)
	Argent Copper (*AC)
	Argent Gold (*AG)
	Argent Silver (*AS)
	Mirror (*M)
	Mirror Gold (*MIRG)
	Eccoflex Black (*EB)
	Eccoflex Tan (*ET)
FLS48-30-*	All Other Finishes

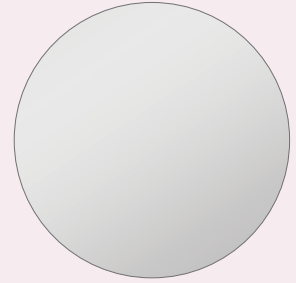
Add finish code to end of part number
ex: **FLS48-30-AG**

See pages O-6~7 for color chart



Create Your Formula

FlexLam offers hundreds of design and finish combinations suitable for any environment. Here's how to create your formula for success.



STEP 1: FlexLam Flat Sheet



STEP 2: Choose Any Finish



FLEXLAM

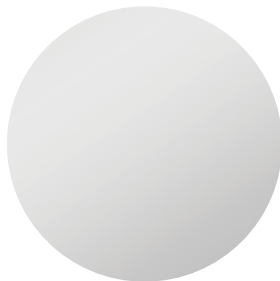
Shown: Flat Sheet + Bermuda Bronze
= FLS48-30-BB

See pages O-6~7 for color chart.



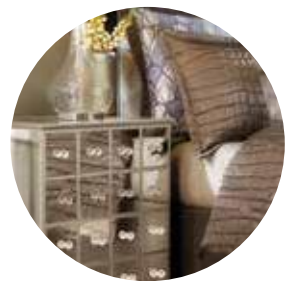
STEP 1: *FlexLam Flat Sheet*

+



STEP 2: *Choose Any Finish*

=



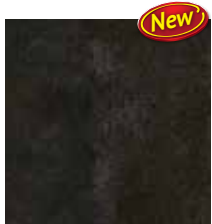
FLEXLAM

Shown: Flat Sheet + Mirror Silver = FLS48-30-M

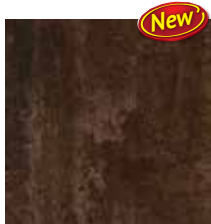
See pages O-6~7 for color chart.

FlexLam FINISHES

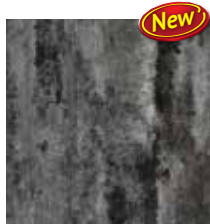
Argent Finishes have color throughout and a metallic luster. Request physical samples as printed images may not be accurate.



ABSTRACT BRONZE
(*ABS B)



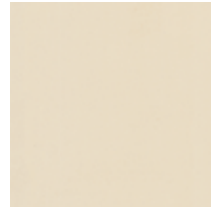
ABSTRACT COPPER
(*ABS C)



ABSTRACT SILVER
(*ABS S)



AFRICAN CHERRY
(*AFCH)



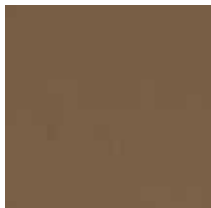
ALMOND
(*AL)



AMERICAN WALNUT
(*AMW)



ANTIQUÉ BRONZE
(*ANTB)



ARGENT BRONZE
(*AB)



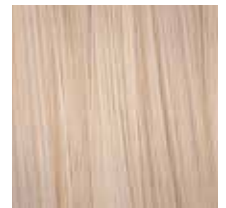
ARGENT SILVER
(*AS)



BERMUDA BRONZE
(*BB)



BRONZE FANTASY
(*BF)



BRONZE STRATA
(*BRSTR)



BRUSHED ALUMINUM
(*BA)



BRUSHED COPPER
(*BC)



BRUSHED NICKEL
(*BN)



BRUSHED ONYX
(*BO)



BRUSHED STAINLESS
(*BS)



CASHMERE MELODY
(*CASH)



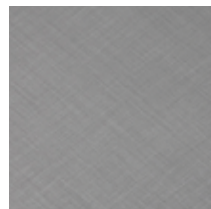
COPPER FANTASY
(*CF)



CRACKED COPPER
(*CC)



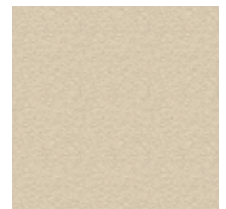
CROSSHATCH SILVER
(*CS)



DIAMOND BRUSHED
(*DB)



DISTRESSED WHITE
(*DW)



ECCOFLEX TAN
(*ET) Paintable



■ Available Colors for Linear Collection

⊕ Available Colors for Gridmax™ and Outlet Covers

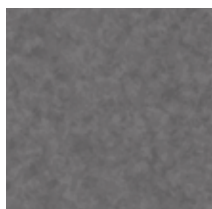
➤ Available Colors for Trims (Minimums Apply)

Ⓢ High Traffic Finishes have color throughout so scratches are less visible

* Now Available Tuffcote™ on selected finishes. A revolutionary protection shield that offers superior durability and scratch resistance.

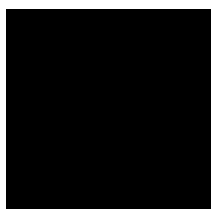
FlexLam FINISHES

Argent Finishes have color throughout and a metallic luster. Request physical samples as printed images may not be accurate.



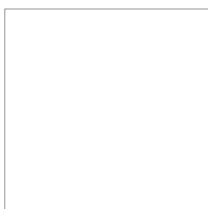
GALVANIZED
(*GAL)

+ > * ■



GLOSS BLACK
(*BK)

■



GLOSS WHITE
(*WH) *Paintable*

+ > ■



LATTE
(*LAT)

■



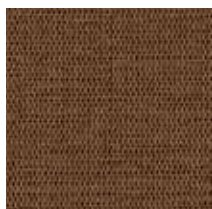
LIGHT MAPLE
(*LM)

■



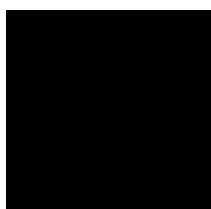
LINEN BEIGE
(*LINB)

*



LINEN CHOCOLATE
(*LC)

*



MATTE BLACK
(*MB)

■



MATTE WHITE
(*MW) *Paintable*

+ > ■



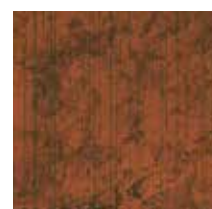
MIRROR
(*M)

■



MIRROR GOLD
(*MIRG)

■



MOONSTONE COPPER
(*MC)

+ > *



MUTED GOLD
(*MG)

+ > *



OIL RUBBED BRONZE
(*ORB)

+ > * ■



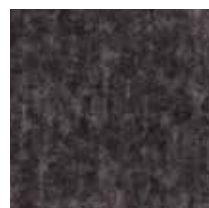
OREGON ASH
(*OA)

■



PEARWOOD
(*PW)

■



SMOKED PEWTER
(*SP)

+ > * ■



STEEL STRATA
(*STSTR)

■



TRAVERTINE
(*TRA)

*



VINTAGE METAL
(*VM)

* ■



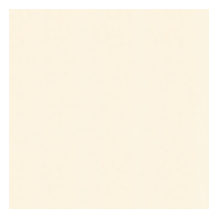
WASHED OAK
(*WO)

■



WELSH CHERRY
(*WC)

>



WINTER WHITE
(*WW)

⊙ > ■

■ Available Colors for Linear Collection

+ Available Colors for Gridmax™ and Outlet Covers

> Available Colors for Trims (Minimums Apply)

⊙ High Traffic Finishes have color throughout so scratches are less visible

* Now Available Tuffcote™ on selected finishes. A revolutionary protection shield that offers superior durability and scratch resistance.

FlexLam
MAX
 Wall Panels

Unique,
 Deeply Textured,
 3-D designs

FEATURES

LIGHTWEIGHT



EASY-TO-INSTALL



IMPACT RESISTANT



ABRASION RESISTANT



CHEMICAL RESISTANT



STAIN RESISTANT



CLASS A FIRE RATED



COLOR-THROUGH MATERIAL

Perfect for High Traffic Areas



Strikingly Beautiful, Deeply Textured,
 and Durable Decorative Surfacing Solutions

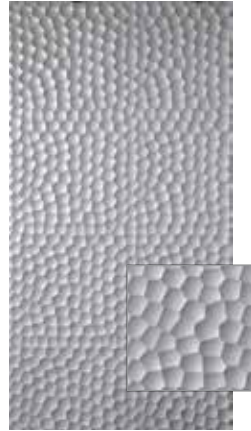
FlexLam MAX offers deeply textured 4' x 8' wall panels in a thicker .045" material that is color-through for superior scratch and impact resistance. These are our boldest 3-dimensional patterns to date and provide even greater depth to walls.

With six contemporary designs, FlexLam MAX will make any space the envy of everyone. All designs come with our BIO (Built-In-Overlap) system that makes installation easy and creates a less visible seam.

Combine these patterns with five new finishes to create a unique, modern look for any space.



Sheet Size: 4' x 8' | Thickness: .045"



CRATER
PESM48-CRAT-* **B**



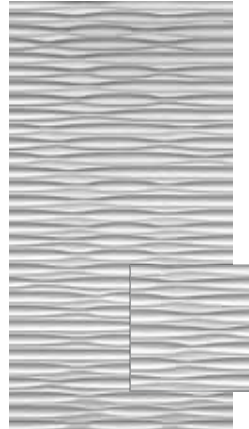
LOTUS
PESM48-LOTUS-* **B**



MORPHEUS
PESM48-MOR-* **B**



PETAL
PESM48-PETAL-* **B**



SONIC
PESM48-SONIC-* **B**



TSUNAMI
PESM48-TSUN-* **B**

FlexLam MAX FINISHES



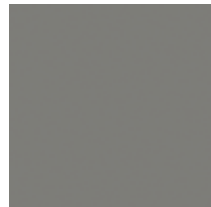
CALCUTTA BLACK
(*CALBK)



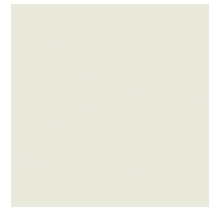
COCOA
(*COCOA)



TAN
(*TAN)



TITANIUM GRAY
(*TITGR)



WINTER WHITE
(*WWHT)

B BIO (Built In Overlap)

See page O-18 for full type description

Detail view represents a 12" x 12" section of the panel pattern.

FlexLam 3D WALL PANELS (TEXTURED) LINEAR COLLECTION



Elevate your space with our Linear Collection of Flexlam Wall Panels. Subtle texture and clean lines play with light and shadow, creating a sophisticated contemporary aesthetic. Modern simplicity at its best, the Linear Collection is available in 20 striking finishes. Inspiration made visible.

Features:

- Can be die cut to almost any shape needed (furniture parts, mouldings, tables, etc.)
- Can be bent to fit curved surfaces – from soft curves to column wraps
- Can be flat-laminated or profile-wrapped to various substrates
- Available in 20 FlexLam Finishes on p. O-6~7

Great for a variety of applications:

- Exhibits and displays
- Door and drawer fascias
- Store fixtures
- Cabinets, counters & shelving
- Moulding and framing
- Ceiling and wall panels
- RV/auto/marine



Create Your Formula

FlexLam offers hundreds of design and finish combinations suitable for any environment.

Here's how to create your formula for success.



STEP 1: Choose Any Pattern



STEP 2: Choose Any Finish



FLEXLAM

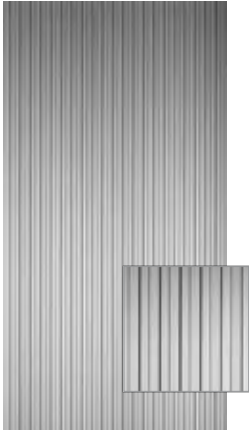
*Shown: Gobi
+ Winter White = PES48-GOBI-WW*

*See page O-11 for patterns.
See pages O-6~7 for color chart.*

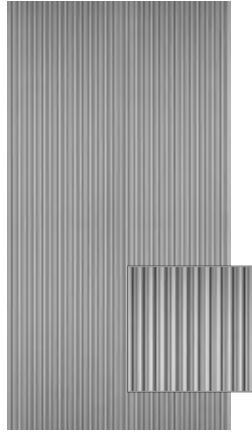


FlexLam Textured (3-Dimensional) Wall Panels - Linear Collection

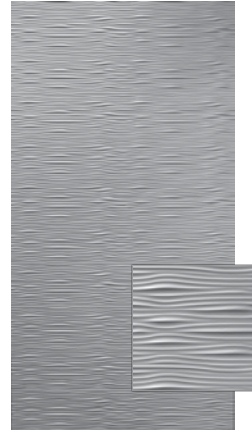
Sheet Size: 4' x 8' & 4' x 10' | Thickness: .030"



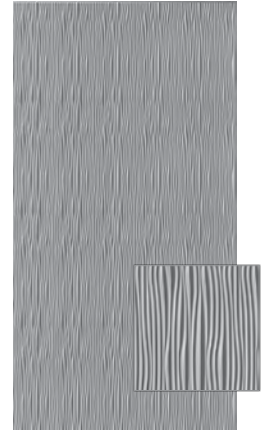
BARS 1
PES48-BARS1-* **B**



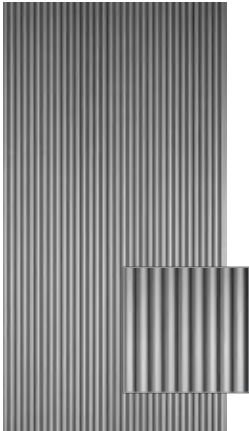
BARS 2
PES48-BARS2-* **B**



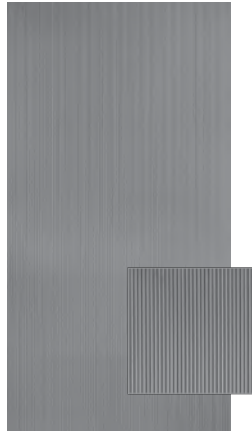
GOBI
PES48-GOBI-* **B**
PES410-GOBI-*



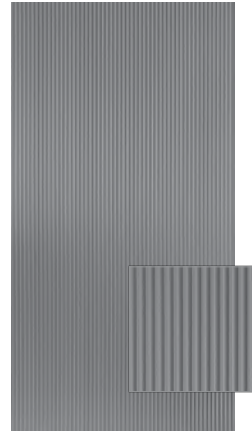
GOBI VERTICAL
PES48-GOBI-***V** **B**
PES410-GOBI-***V**



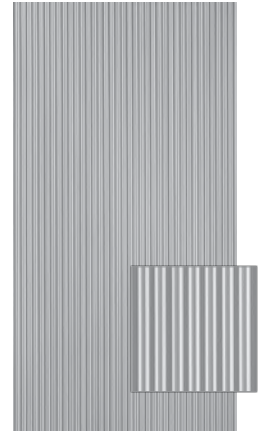
LARGE FLUTE
PES48-LGFLU-* **B**



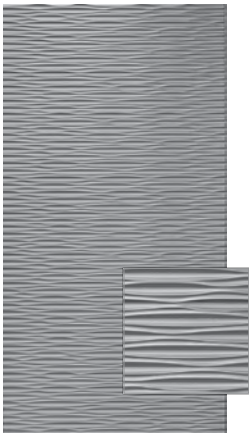
RIB 1
PES48-RIB1-* **B**
PES410-RIB1-*



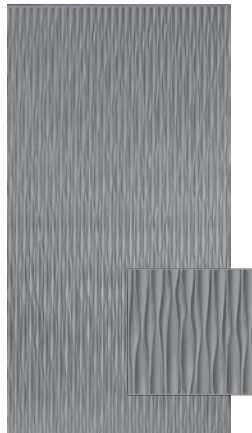
RIB 2
PES48-RIB2-* **B**
PES410-RIB2-*



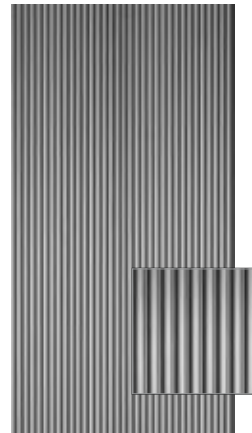
RIDGES
PES48-RID-* **B**
PES410-RID-*



SAHARA
PES48-SAH-* **B**
PES410-SAH-*



SAHARA VERTICAL
PES48-SAH-***V** **B**
PES410-SAH-***V**



SCALLOPED
PES48-SCAL-* **B**

Packing Fee

Add finish code to end of part number
ex: **PES48-RID-WW**

B BIO (Built In Overlap)

BB Bead + Button

See page O-18 for full type description

*See pages O-6-7 for color chart

Detail view represents a 12" x 12" section of the panel pattern.

FlexLam 3D WALL PANELS (TEXTURED)

Features:

- Can be die cut to almost any shape needed (furniture parts, mouldings, tables, etc.)
- Can be bent to fit curved surfaces – from soft curves to column wraps
- Can be flat-laminated or profile-wrapped to various substrates
- Available in all FlexLam Finishes on p. O-6~7

Great for a variety of applications:

- Exhibits and displays
- Door and drawer fascias
- Store fixtures
- Cabinets, counters & shelving
- Moulding and framing
- Ceiling and wall panels
- RV/auto/marine



Create Your Formula

FlexLam offers hundreds of design and finish combinations suitable for any environment.

Here's how to create your formula for success.



STEP 1: *Choose Any Pattern*



STEP 2: *Choose Any Finish*



FLEXLAM

*Shown: Damask
+ Linen Beige = PES48-DAM-LNB*

*See pages O-13~17 for patterns.
See pages O-6~7 for color chart.*

FlexLam Textured (3-Dimensional) Wall Panels

Sheet Size: 4' x 8' & 4' x 10' | Thickness: .030"



ALPHABET SOUP

PES48-ALSP-*
PES410-ALSP-*



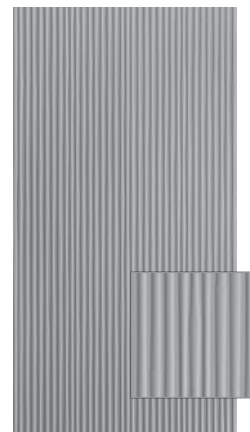
ARIEL

PES48-ARIEL-*
PES410-ARIEL-*



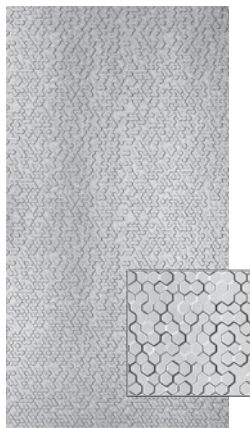
AUDREY

PES48-AUD-*



BAMBOO

PES48-BAM-*
PES410-BAM-*



BEE HIVE

PES48-BEE-*
PES410-BEE-*



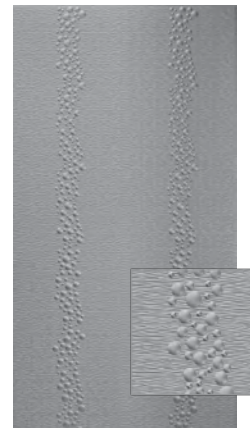
BOSTON

PES48-BOS-*
PES410-BOS-*



BOWTIE

PES48-BOW-*
PES410-BOW-*



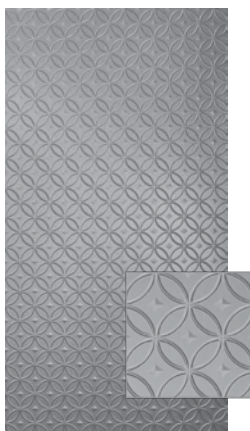
CASCADE

PES48-CAS-*
PES410-CAS-*



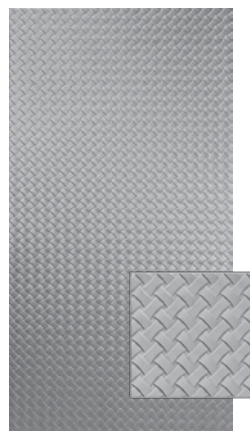
CAYMAN

PES48-CAY-*



CELESTIAL

PES48-CEL-*
PES410-CEL-*



CELTIC WEAVE

PES48-CW-*
PES410-CW-*



Packing Fee

Add finish code to end of part number
ex: PES48-CAS-AG

B BIO (Built In Overlap)

BB Bead + Button

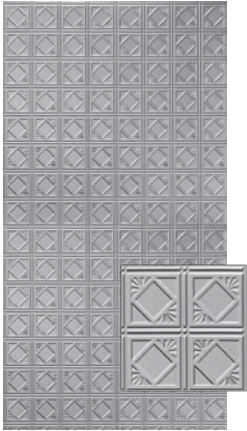
See page O-18 for full type description

*See pages O-6-7 for color chart

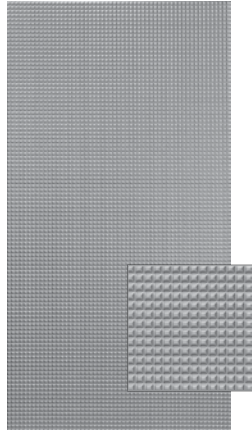
Detail view represents a 12" x 12" section of the panel pattern.

FlexLam Textured (3-Dimensional) Wall Panels

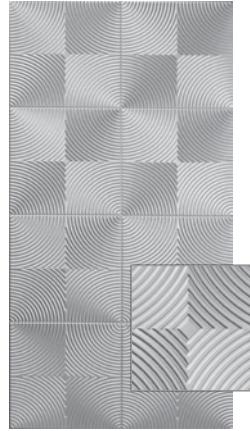
Sheet Size: 4' x 8' & 4' x 10' | Thickness: .030"



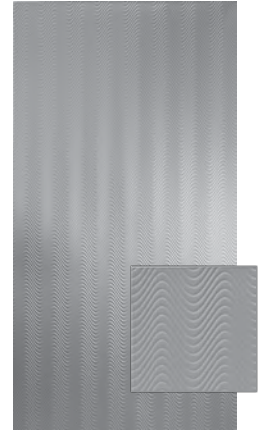
CHARLESTON
PES48-CHA-* **BB**



CHOCOLATE SQUARES
PES48-CHO-* **B**
PES410-CHO-*



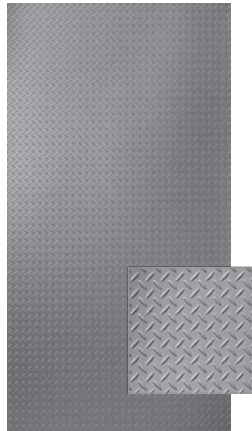
CURVATION
PES48-CURVA-* **B**
PES410-CURVA-*



CURVES
PES48-CURV-*
PES410-CURV-*



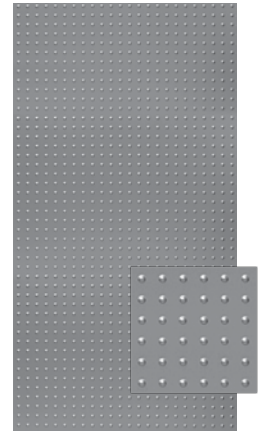
DAMASK
PES48-DAM-* **B**



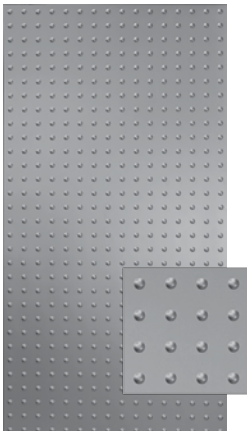
DIAMOND PLATE
PES48-DP-* **B**



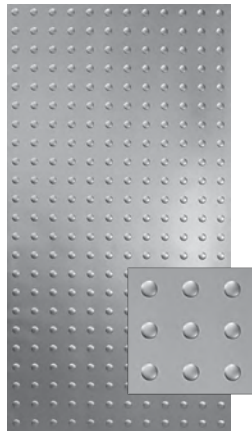
DOGWOOD
PES48-DOG-* **B**



DOME 1
PES48-DOME1-*



DOME 2
PES48-DOME2-*



DOME 3
PES48-DOME3-*



FLUTED
PES48-FLU-*

Packing Fee

Add finish code to end of part number
 ex: **PES48-CAS-AG**

B BIO (Built In Overlap)

BB Bead + Button

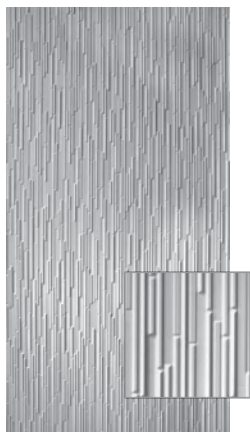
See page O-18 for full type description

*See pages O-6-7 for color chart

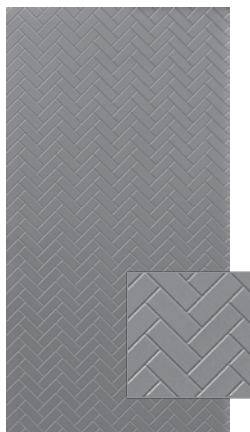
Detail view represents a 12" x 12" section of the panel pattern.

FlexLam Textured (3-Dimensional) Wall Panels

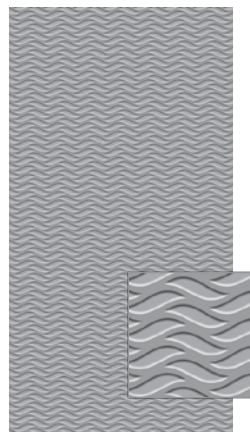
Sheet Size: 4' x 8' & 4' x 10' | Thickness: .030"



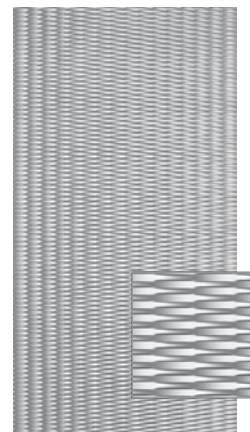
GLACIER
PES48-GLAC-* **B**
PES410-GLAC-*



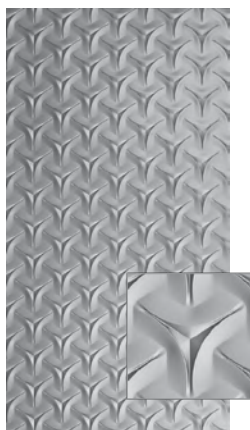
HERRINGBONE
PES48-HER-* **B**
PES410-HER-*



INFERNO
PES48-INF-* **B**
PES410-INF-*



INTERLINK
PES48-INTER-* **B**
PES410-INTER-*



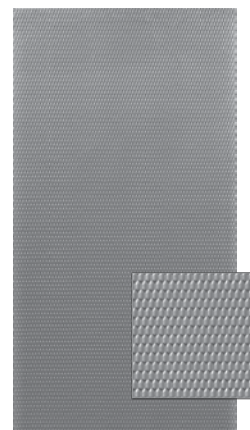
JAPANESE WEAVE
PES48-JAPWEA-* **B**
PES410-JAPWEA-*



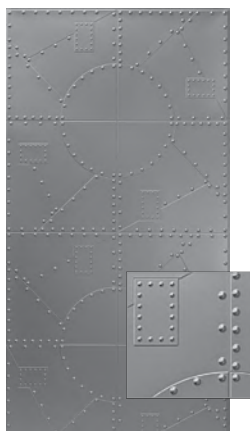
KALAHARI
PES48-KAL-* **B**
PES410-KAL-*



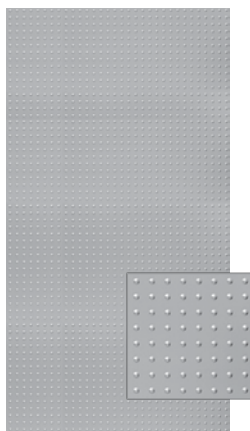
KELP
PES48-KELP-* **B**



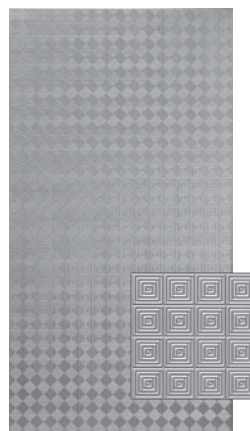
MARQUIS
PES48-MAR-*



METAL PLATES
PES48-MP-* **B**



MINI DOME
PES48-MD-*



MINI QUADRO
PES48-MQUA-* **B**

Packing Fee

Add finish code to end of part number
 ex: **PES48-CAS-AG**

B BIO (Built In Overlap)

BB Bead + Button

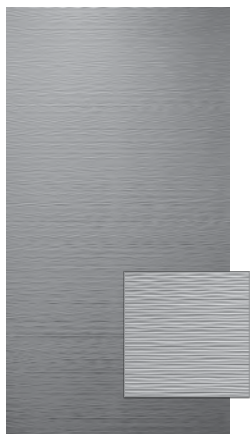
See page O-18 for full type description

*See pages O-6-7 for color chart

Detail view represents a 12" x 12" section of the panel pattern.

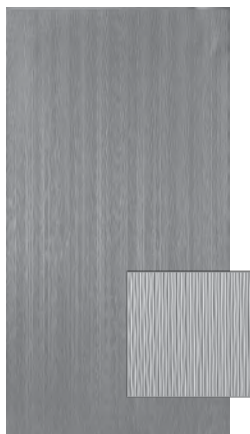
FlexLam Textured (3-Dimensional) Wall Panels

Sheet Size: 4' x 8' & 4' x 10' | Thickness: .030"



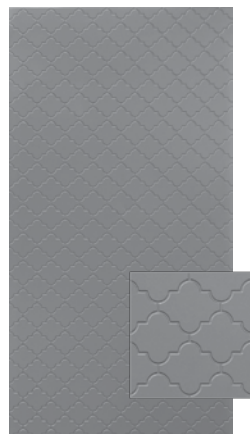
MOJAVE

PES48-MOJ-*
PES410-MOJ-*



MOJAVE VERTICAL

PES48-MOJ-***-V**
PES410-MOJ-***-V**



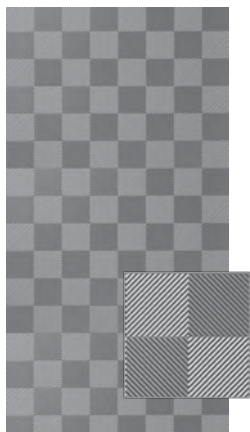
MOROCCO

PES48-MOR-*



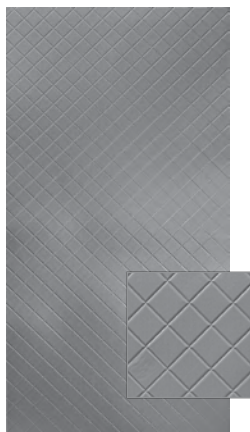
NETTLE

PES48-NET-*



QUADRO

PES48-QUA-*
PES410-QUA-*



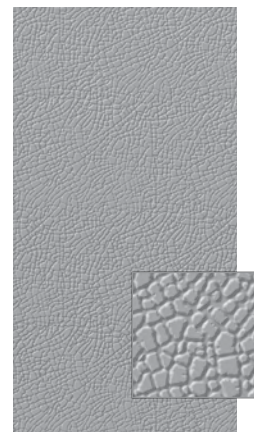
QUILTED

PES48-QUI-*



RANDOM LINES

PES48-RL-*



SAFARI

PES48-SAF-*
PES410-SAF-*



SAVANNAH

PES48-SAV-*
PES410-SAV-*



SCULPTED PETALS

PES48-SCULP-*
PES410-SCULP-*



SHALLOT

PES48-SHAL-*
PES410-SHAL-*



Packing Fee

Add finish code to end of part number
ex: PES48-CAS-AG

B BIO (Built In Overlap)

BB Bead + Button

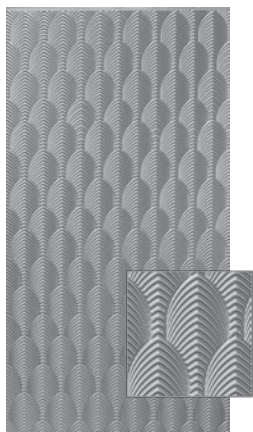
See page O-18 for full type description

*See pages O-6-7 for color chart

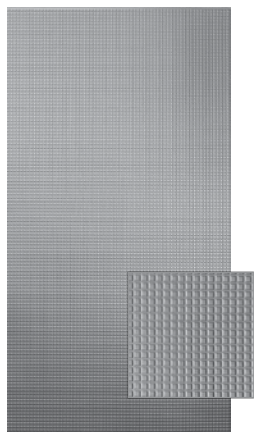
Detail view represents a 12" x 12" section of the panel pattern.

FlexLam Textured (3-Dimensional) Wall Panels

Sheet Size: 4' x 8' & 4' x 10' | Thickness: .030"



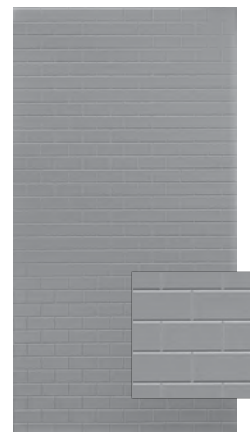
SOUTH BEACH
PES48-SOB-*
PES410-SOB-*



SQUARE 5
PES48-SQ5-*
PES410-SQ5-*



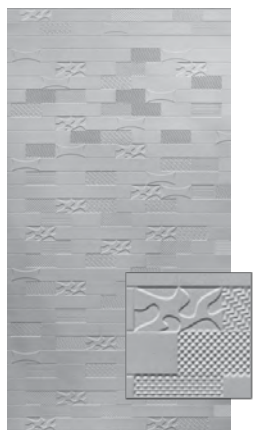
STRIKE
PES48-HAM-*
PES410-HAM-*



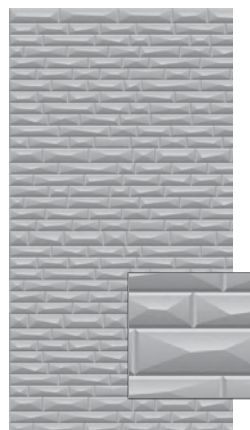
SUBWAY TILES
PES48-SUB-*
PES410-SUB-*



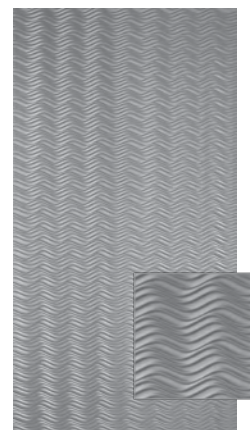
TETRUS
PES48-TET-*
PES410-TET-*



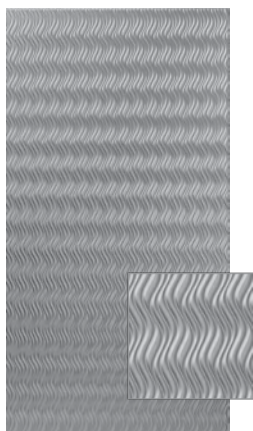
VERSA-TILE
PES48-VERSA-*
PES410-VERSA-*



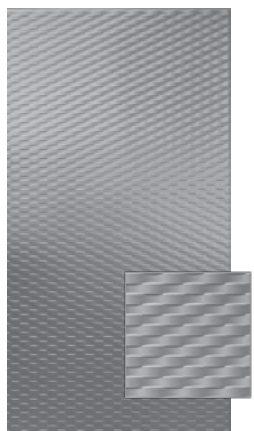
VISTA
PES48-VISTA-*
PES410-VISTA-*



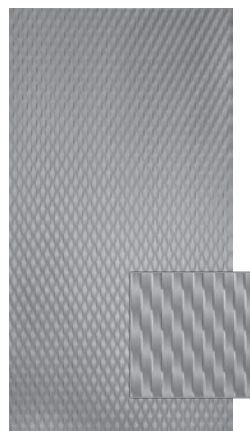
WAVATION
PES48-WAV-*
PES410-WAV-*



WAVATION VERTICAL
PES48-WAV-*-V
PES410-WAV-*-V



WEAVE
PES48-WEA-*
PES410-WEA-*



WEAVE VERTICAL
PES48-WEA-*-V
PES410-WEA-*-V



Packing Fee

Add finish code to end of part number
 ex: **PES48-CAS-AG**

B BIO (Built In Overlap)

BB Bead + Button

See page O-18 for full type description

*See pages O-6-7 for color chart

Detail view represents a 12" x 12" section of the panel pattern.



Shown: Vista + Gloss White = PES48-VISTA-WH

FlexLam Fabrication & Installations

B

BIO (BUILT-IN-OVERLAP)

Our BIO has flat edges on two adjoining sides of the FlexLam Wall panel. By orienting all sheets in the same direction and overlapping the panels, the seams are less noticeable. The placement of the sheet is also more flexible so that slight imperfections in the substrate will not affect the finished look.

When overlapping four FlexLam Wall panels, it is necessary to a 1/2" notch in panels 2 and 3 to avoid a bulge where the panels meet.



BB

BEAD + BUTTON

Certain FlexLam patterns that do not have a BIO may have a Bead + Button feature. To install, overlap two or more sheets or tiles on the Bead + Button perimeter which will join at the pre-determined connection points.



FlexLam Trim

Available in 4' & 8' Lengths

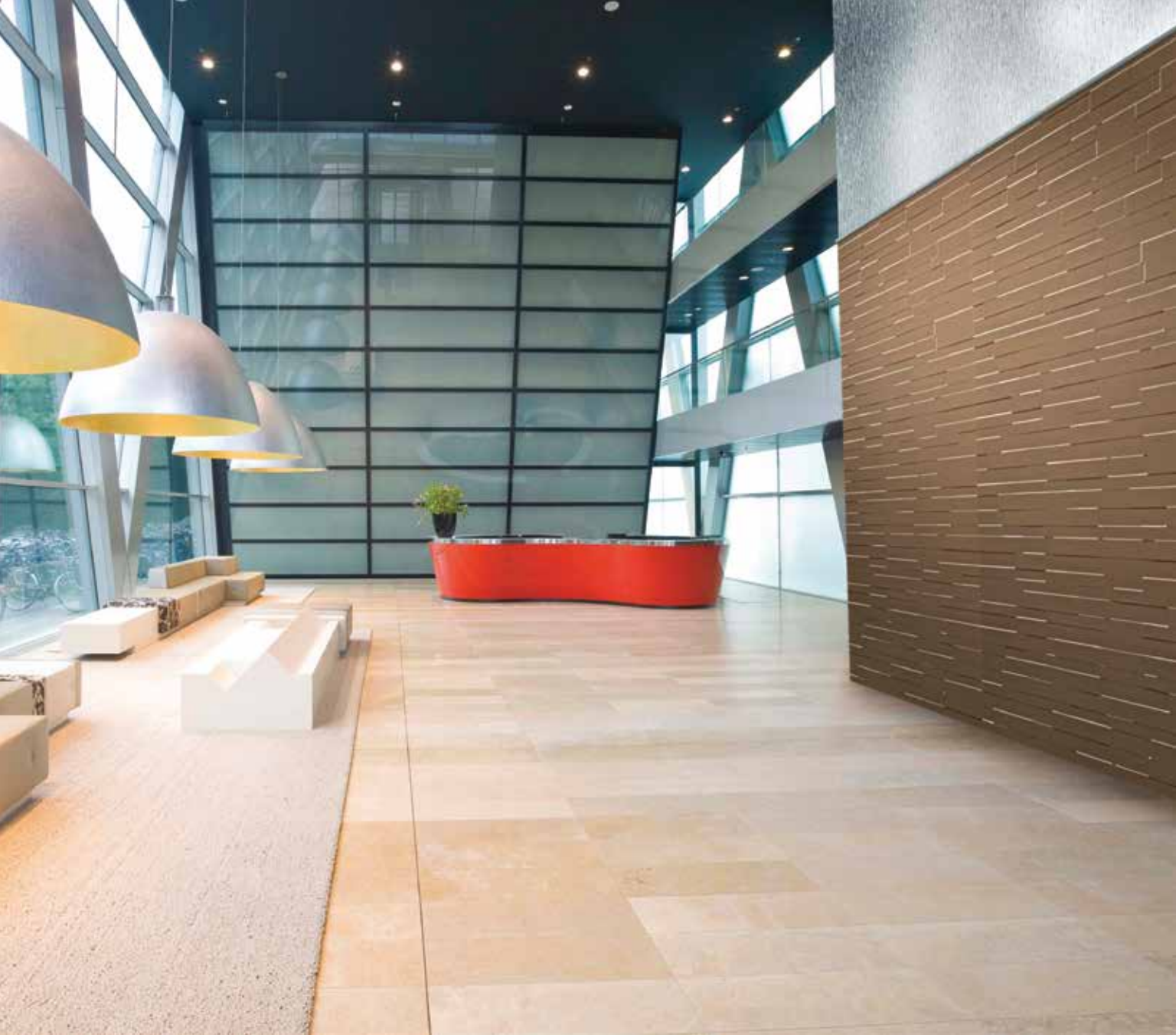
FlexLam trim is available to join and finish FlexLam Structures. Edge J-Trim, Divider Trim, Inside Corners and Outside Corners and can be easily cut to size.

The Edge J-Trim simply slides onto the cut edge of the panel. Most installations use decorative wood or metal mouldings, but if these elements are not used, FlexLam Trim will finish the edges nicely.



* Trims available only in selective colors - See pages O-6-7 for color chart

Box fee on 8' lengths if less than 25 pcs.



STEP 1: *Choose Any Pattern*

+



STEP 2: *Choose Any Finish*

=



FLEXLAM

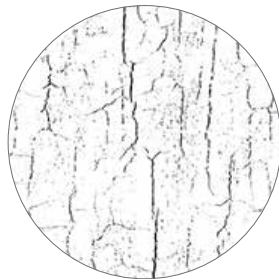
Shown: Tetrus + Argent Bronze = PES48-TET-AB

See pages O-13-17 for patterns. See pages O-6-7 for color chart.



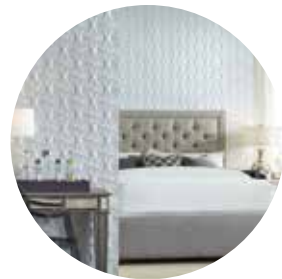
STEP 1: *Choose Any Pattern*

+



STEP 2: *Choose Any Finish*

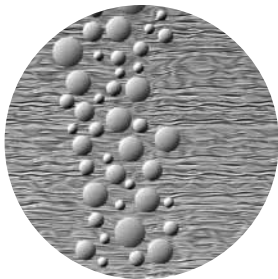
=



FLEXLAM

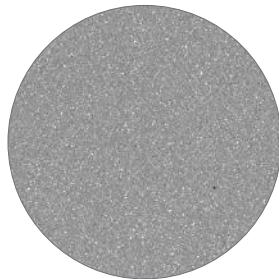
Shown: Versa Tile + Distressed White = PES48-VERSA-DW

See pages O-13-17 for patterns. See pages O-6-7 for color chart.



STEP 1: *Choose Any Pattern*

+



STEP 2: *Choose Any Finish*

=



FLEXLAM

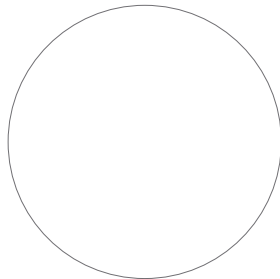
Shown: Cascade + Argent Silver = PES48-CAS-AS

See pages O-13-17 for patterns. See pages O-6-7 for color chart.



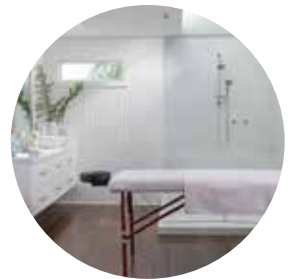
STEP 1: *Choose Any Pattern*

+



STEP 2: *Choose Any Finish*

=



FLEXLAM

Shown: Kalahari + Gloss White = PES48-KAL-WH

See pages O-13-17 for patterns. See pages O-6-7 for color chart.



STEP 1: *Choose Any Pattern*

+



STEP 2: *Choose Any Finish*

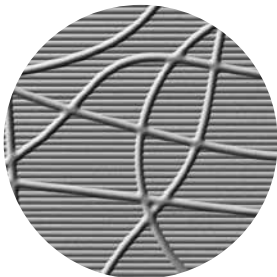
=



FLEXLAM

Shown: Dogwood + Winter White = PES48-DOG-WW

See pages O-13-17 for patterns. See pages O-6-7 for color chart.



STEP 1: *Choose Any Pattern*

+



STEP 2: *Choose Any Finish*

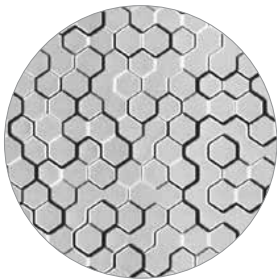
=



FLEXLAM

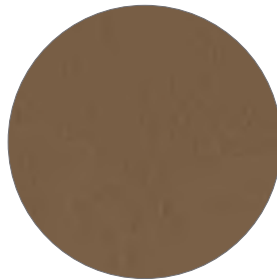
Shown: Random lines + Antique Bronze = PES48-RL-ANTB

See pages O-13-17 for patterns. See pages O-6-7 for color chart.



STEP 1: *Choose Any Pattern*

+



STEP 2: *Choose Any Finish*

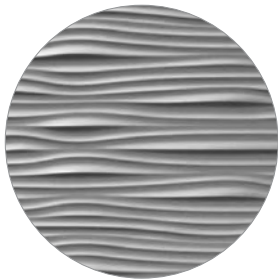
=



FLEXLAM

Shown: Beehive + Argent Bronze = PES48-BEE-AB

See pages O-13-17 for patterns. See pages O-6-7 for color chart.



STEP 1: *Choose Any Pattern*

+



STEP 2: *Choose Any Finish*

=



FLEXLAM

Shown: Gobi + Winter White = PES48-GOBI-WW

See pages O-13-17 for patterns. See pages O-6-7 for color chart.


Metal Like Trims

Edgebanding and profile wrapping comes in a diverse range of finishes with a clear protective film on the front, and a standard .020" thickness.

- Designed for all trim applications
- **Material:** deposits of metalized plastic with a durable lacquered finish, laminated to a thermoplastic backer.

- Protective cover
- Can be sawed, cut or routed without delamination.
- Clean, finished edges without filing
- Scratch resistant

Features

-  Impact Resistant
-  Chemical Resistant

250 FT. COIL NTP TRIM (With Adhesive) .020 Thickness

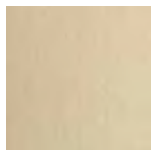
Part #	Size
NTP-25-*	1/4"
NTP-50-*	1/2"
NTP-75-*	3/4"
NTP-875-*	7/8"
NTP-1-*	1"
NTP-1-25-*	1-1/4"
NTP-1-50-*	1-1/2"
NTP-2-*	2"
NTP-3-*	3"
NTP-6-*	6"
NTP-24-*	24"- 50 ft. coil

500 FT. COIL NTP TRIM (Primed/No Adhesive) .020 Thickness

Part #	Size
ET-50-*	1/2"
ET-75-*	3/4"
ET-875-*	7/8"
ET-1-*	1"
ET-1-125-POL/C	1-1/8"
ET-1-25-*	1-1/4"
ET-1-50-*	1-1/2"
ET-2-*	2"
ET-3-*	3"
ET-6-*	6"
ET-24-*	24"- 50 ft. coil

*Matching 4' x 8' sheets are available. Please inquire.
Additional Widths are available - please call with your inquiry*

PEEL AND STICK FINISHES AVAILABLE



POLISHED BRASS
(*POL/B)



POLISHED CHROME
(*POL/C)



BRUSHED BRASS
(*BRU/B)



BRUSHED CHROME
(*BRU/C)



BRUSHED STAINLESS STEEL
(*BRU/SS)



GLOSS BLACK
(*BK)

Note: ET Trims are primed for use with Automatic Edgebanding except Gloss Black



Two Options:

Digital printing

High-quality, full color images are placed directly onto flat or textured substrates via a direct-to-substrate ink jet printer. Company logos are a popular choice for this application in corporate buildings and retail settings.

Custom Cooling

Incorporates one-of-a-kind designs and logos into the material yielding a functional, durable and affordable branded surface for walls and ceilings. Minimums may apply.

STEP 1: *Choose Any FlexLam Flat Sheet or Any 3D Wall Panel Pattern*

STEP 2: *Choose Any Finish*

STEP 3: *Choose Your Design or Logo*

See pages O-4~5 for FlexLam Flat Sheet.

See pages O-8~25 for FlexLam 3D Wall Panels.

See pages O-6~7 for color chart.



*Shown: Diamond Plate + Brushed Aluminum + Custom Printed Logo
PES48-DP-BA*



*Shown: Cascade + Brushed Copper + Custom Tooled Logo
PES48-CAS-BC*



Shown: Metal Plates + Argent Bronze + Custom Tooled Logo
PES48-MP-AB

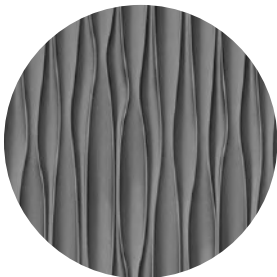


Shown: Bamboo + Gloss White (Paintable) + Custom Printed Logo
PES48-BAM-WH



Shown: Curves + Cracked Copper + Custom Printed Art
PES48-CURV-CC

See pages O-13-17 for patterns. See pages O-6-7 for color chart.



STEP 1: Choose Any Pattern

+



STEP 2: Choose Any Finish

=



FLEXLAM

Shown: Sahara Vertical + Travertine = PES48-SAH-TRA-V

See pages O-13-17 for patterns. See pages O-6-7 for color chart.



Shown: Quadro + Gloss White (Paintable) + Custom Tooled Logo
PES48-QUA-WH



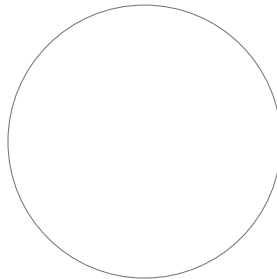
Shown: Chocolate Squares + Gloss White (Paintable) + Custom Tooled Logo
PES48-CHO-WH

See pages O-13-17 for patterns. See pages O-6-7 for color chart.



STEP 1: Choose Any Pattern

+



STEP 2: Choose Any Finish

=



FLEXLAM

Shown: Audrey + Gloss White + Custom Tooled Logo = PES48-AUD-WH

See pages O-13-17 for patterns. See pages O-6-7 for color chart.

WAINSCOTING

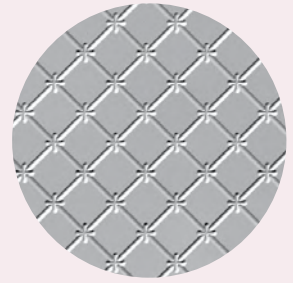
Panel size: 30" - 32" x 48"

Thickness: .030"

These 30"-32" x 48" panels have a unique BIO (built in overlap) feature that makes seams less visible.



Create Your Formula
For Success



STEP 1: *Choose A Pattern*



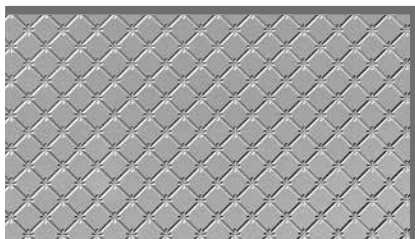
STEP 2: *Choose Any Finish*



FLEXLAM

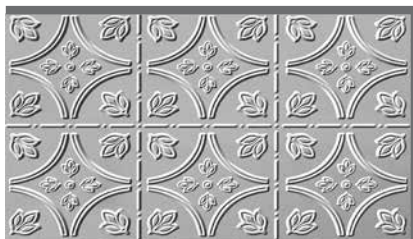
*Shown: Annapolis + Brushed Aluminum
PWS-3248-AN-BA*

30" - 32" x 48" Patterns | Thickness: .030"



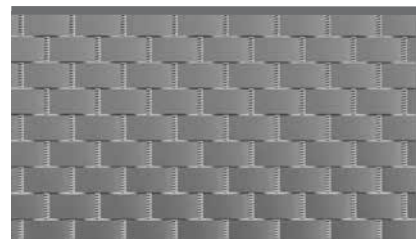
ANNAPOLIS
PWS-3248-AN-*

B



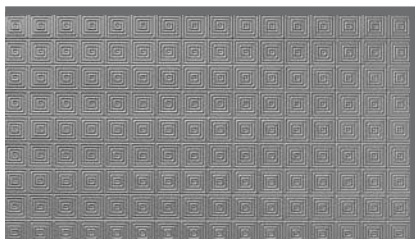
CHATHAM
PWS-3248-CH-*

B



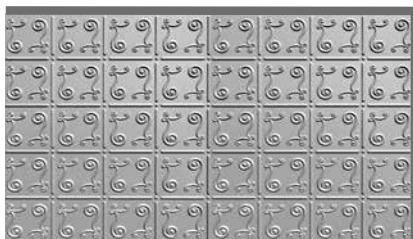
GIANT WEAVE
PWS-3048-GW-*

B



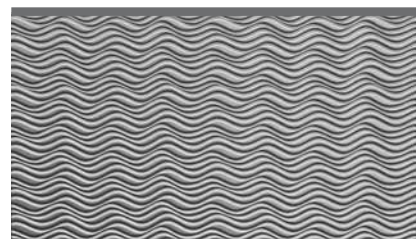
MINI QUADRO
PWS-3048-MQ-*

B



NEW ORLEANS
PWS-3048-NO-*

B



WAVATION
PWS-3248-WAV-*

B

***Finish**

White (*WH)
Argent Bronze (*AB)
Argent Copper (*AC)
Argent Gold (*AG)
Argent Silver (*AS)
Mirror (*M)
Mirror Gold (*MIRG)
All Other Finishes

3 Pc. Minimum

Add finish code to end of part number
ex: PWS-3248-AN-AG

B BIO (Built In Overlap)

See page O-18 for full type description

* See pages O-6~7 for color chart



Shown: Giant Weave + Welsh Cherry
PWS-3048-GW-WC

DOOR SKINS

Size: 48" x 84"

Thickness: .013"

FlexLam Door Skins are designed to apply over existing flat panel doors for a new, fresh look without the expense.

Features:

- *Adhesive backing*
- *Easy fabrication*
- *High impact finish*
- *Chemical resistant*
- *Cut to fit most common door sizes*

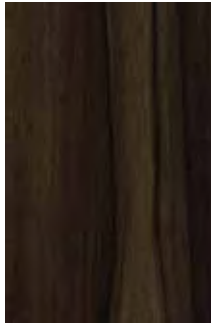


*Shown: Medium Walnut
MDS4884-MW*

48" x 84" Patterns | Thickness: .013"



SOPRANO
MDS4884-SOP



NOCE SECCHIA
MDS4884-NS



RUSTIC ALDER
MDS4884-RA



ESPRESSO APPLE
MDS4884-EA



DRIFTWOOD
MDS4884-DR



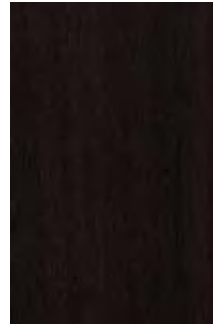
PORTUNA
MDS4884-POR



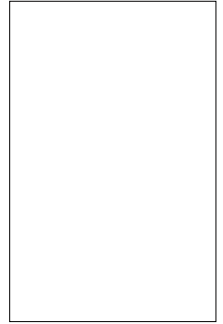
MEDIUM CHERRY
MDS4884-MCH



MEDIUM WALNUT
MDS4884-MW



DARK WALNUT
MDS4884-DW



GLOSS WHITE
MDS4884-GW



BEFORE



AFTER

INTRODUCING MetLam

What is MetLam?

MetLam is a collection of high-pressure laminates (HPL) with real aluminum, pebbled aluminum, mill aluminum, and copper steel surfaces. Available with or without a phenolic backing, these metallic sheets are easy to work with and can bend to fit curved applications. MetLam enhances the look of real metals with embossing, hand painting, etching, and other innovative techniques.

Features:

- *Real metal surface with high abrasion and chemical resistance*
- *Suitable for vertical and light-duty horizontal applications*
- *Can bend to fit curved surfaces*
- *Can be applied directly to drywall*
- *Ships with clear protective film for ease of handling*
- *UV stable (varies with installation location)*
- *Scratch and chemical resistant properties*



Create Your Formula

Metlam HPL offers a variety of high quality design solutions featuring innovative techniques to enhance the look of metals. Here's how to create your formula for success.



STEP 1: *Choose Any Pattern*



METLAM

*Shown: Diamond Rose Gold
NM48-DE-DRG*

MetLam COLLECTIONS



ArtFul Metals *p. O-39*

*Unique unbacked aluminum
4' x 8' sheets available in
15 finishes*



Divine Elements *p. O-42*

*Inspired by nature and mythology
4' x 8' sheets available in
14 finishes*



Aluminum *p. O-44*

*Flat sheet or embossed designs
4' x 8' sheets available in
23 finishes/styles*



Copper *p. O-46*

*Copper embossed designs
4' x 8' sheets available in
6 styles*



Unique Art *p. O-47*

*Hand painted unique works of art
4' x 8' sheets available in
4 styles*

This collection of 15 unique metal finishes range from bright colorful patinas to rich oxidized coppers on mill satin aluminum.

Mill Satin Aluminum:

An unbacked aluminum with a satin finish

Unbacked Metal Laminates have a thicker layer of metal than laminates with phenolic paper backing. This means that when formed, the metal may maintain its shape and are stronger against impacts, chemicals, stains, and abrasions.



*Shown: Funky Cold Patina + Pebble Aluminum
NM48-MIL-FCP*

Features:

- *No counterbalancing required*
- *Adheres directly to most substrates, including drywall*
- *Can be bent or curved*
- *High impact & abrasion resistant*
- *Chemical resistant*
- *Stain resistant*
- *Custom or stock imagery*

TAKE A CLOSER LOOK:

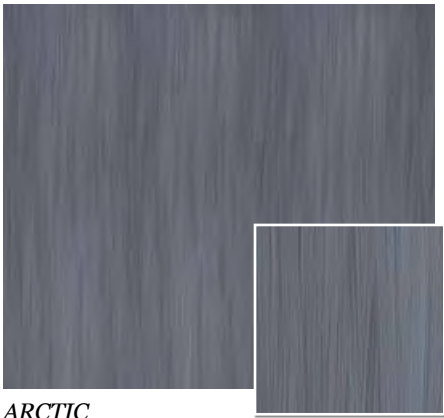


MILL SATIN ALUMINUM

Castle Black - NM48-MIL-CBK

COLLECTION: ARTFUL METALS

Sheet Size: 4' x 8' | Thickness: .032"



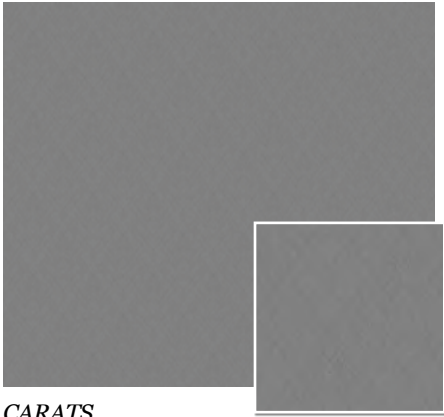
ARCTIC
NM48-MIL-ARCTIC



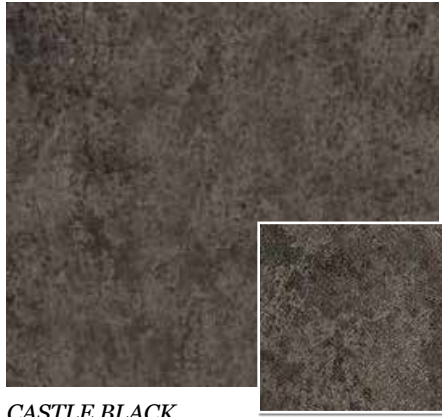
BLACK SANDS
NM48-MIL-BLKSANDS



BOURBON STREAK
NM48-MIL-BOUSTRK



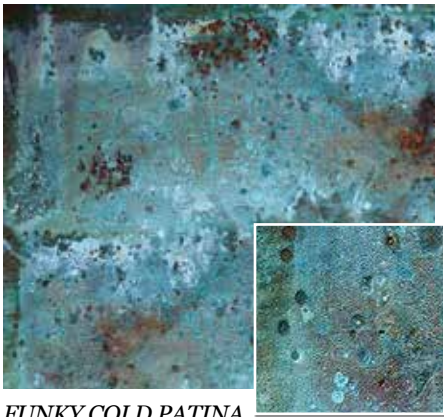
CARATS
NM48-MIL-CARATS



CASTLE BLACK
NM48-MIL-CBK



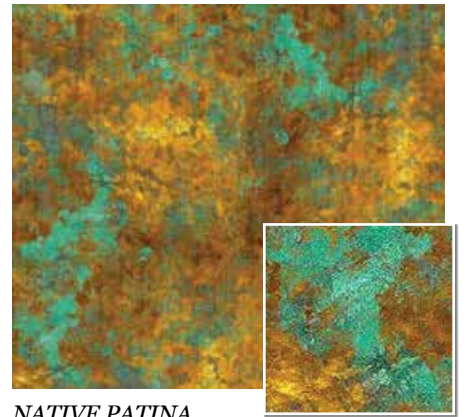
CU LATER
NM48-MIL-CULATER



FUNKY COLD PATINA
NM48-MIL-FCP



GATSBY
NM48-MIL-GATSBY



NATIVE PATINA
NM48-MIL-NATPAT

COLLECTION: ARTFUL METALS

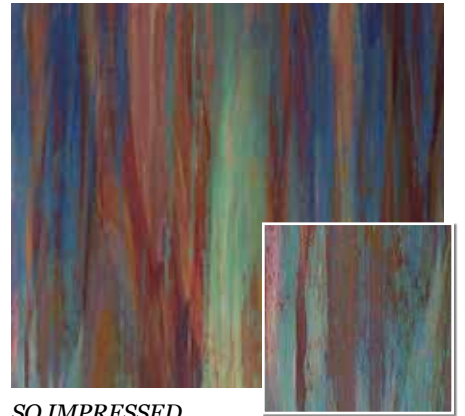
Sheet Size: 4' x 8' | Thickness: .032"



RAVEN
NM48-MIL-RAVEN



RED RUST
NM48-MIL-REDRUST



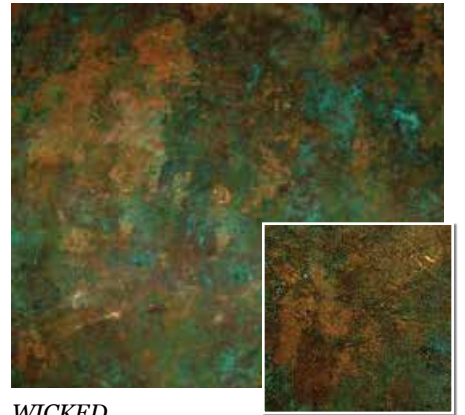
SO IMPRESSED
NM48-MIL-SOIMPR



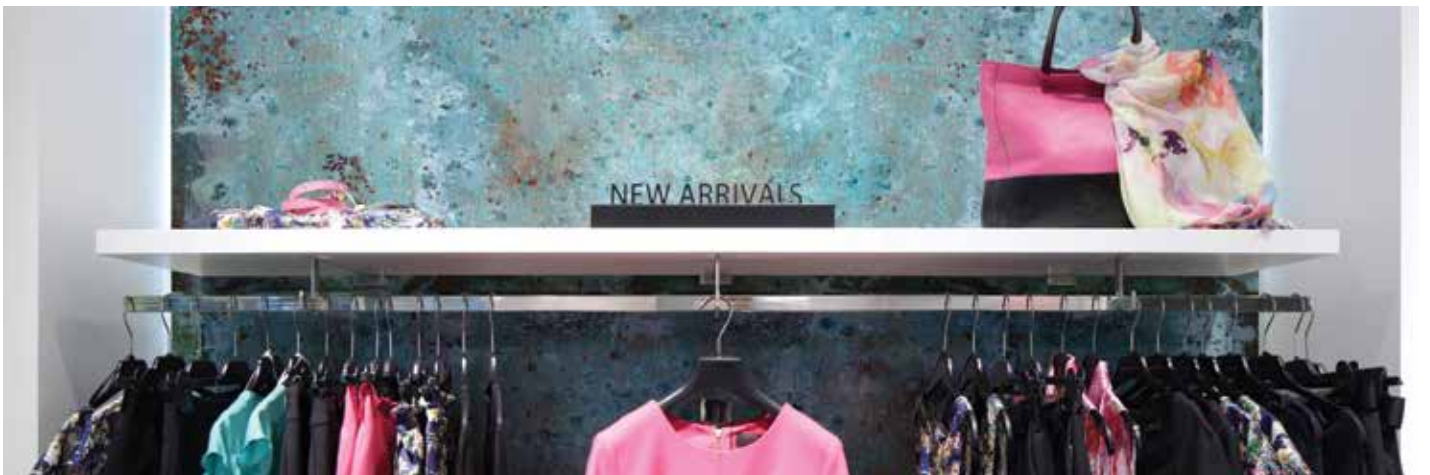
TALISMAN
NM48-MIL-TALMAN



*WELCOME BACK
COPPER*
NM48-MIL-WBC



WICKED
NM48-MIL-WICKED



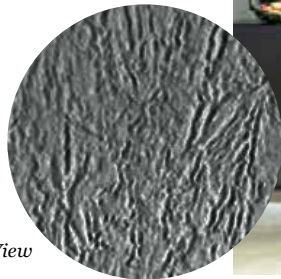
Shown: Funky Cold Patina + Pebble Aluminum
NM48-MIL-FCP

COLLECTION: DIVINE ELEMENTS

Sheet Size: 4' x 8' | Thickness: .032"

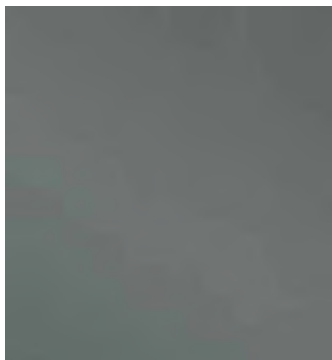
A Metlam Collection Inspired by Nature and Mythology

The Divine Elements Collection combines qualities from water and rare earth elements to celebrate the unique relationship between nature's raw power and human curiosity to bring inspiration to each day. Our new HPL finishes range from Rose Gold and Gun Metal to the iridescent Polished Smoke and classic Brushed Aluminum. The patterns draw inspiration from the natural world, including: **Mill Diamond**, **Waterfall**, **Aqua**, **Neptune** and **Titan** patterns. Together, these pattern and finish combinations are destined to create a legendary design like no other.



Detail View

Shown: Titan Aluminum Gun Metal
NM48-DE-TITAN



ALUMINUM
GUN METAL
NM48-DE-GMA



ALUMINUM
ROSE GOLD
NM48-DE-RG



MILL
GUN METAL
NM48-DE-GMM



TITAN
ALUMINUM GUN METAL
NM48-DE-TITAN

The colors may vary from the actual product shown. Therefore, it is strongly recommended that you order a sample prior to purchase.

COLLECTION: DIVINE ELEMENTS

Sheet Size: 4' x 8' | Thickness: .032"



Shown: Diamond Rose Gold
NM48-DE-DRG



AQUA
ROSE GOLD
NM48-DE-ARG



AQUA
POLISHED SMOKE
NM48-DE-APS



WATERFALL
ROSE GOLD
NM48-DE-WATRG



WATERFALL
ALUMINUM GUN METAL
NM48-DE-WA



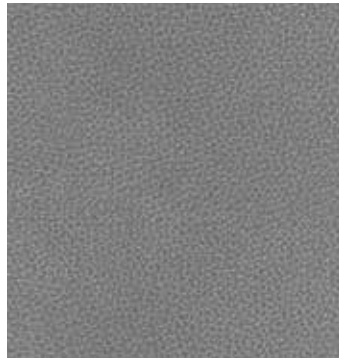
DIAMOND
MILL GUN METAL
NM48-DE-DGM



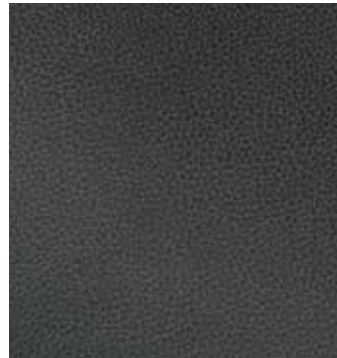
DIAMOND
POLISHED SMOKE
NM48-DE-DPS



DIAMOND
ROSE GOLD
NM48-DE-DRG



NEPTUNE
BRUSHED ALUMINUM
NM48-DE-NEPBA



NEPTUNE
POLISHED SMOKE
NM48-DE-NEPPS



NEPTUNE
ROSE GOLD
NM48-DE-NEPRG

The colors may vary from the actual product shown. Therefore, it is strongly recommended that you order a sample prior to purchase.

Sheet Size: 4' x 8' | Thickness: .035"

COLLECTION: ALUMINUM

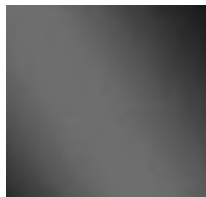
All finishes are available in flat sheets or with embossed designs added. Most finishes are lacquered for abrasion resistance. Polished finishes are anodized.



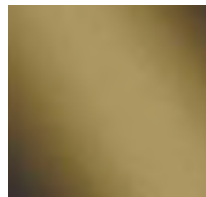
Shown: Aluminum Mill
NM48-STD-MILL



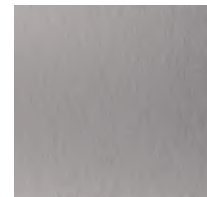
**POLISHED
ALUMINUM
NM48-STD-PA**



**POLISHED
SMOKE
NM48-STD-PS**



**POLISHED
BRASS
NM48-STD-PB**



**BRUSHED
STAINLESS
NM48-STD-BS**



**BRUSHED
BRONZE
NM48-STD-BBR**



**BRUSHED
BRASS
NM48-STD-BB**



**ALUMINUM MILL
NM48-STD-MILL**



**BRUSHED
ALUMINUM
NM48-STD-BA**



**BRUSHED
ALUMINUM
DIAMOND PLATE
NM48-ALU-DP**

COLLECTION: ALUMINUM



BRUSHED
STAINLESS
DIAMOND PLATE
NM48-BS-DP



BRUSHED
ALUMINUM
CORRUGATED
NM48-EMB-COR-BA



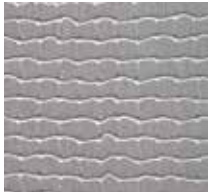
BRUSHED
STAINLESS STEEL
CORRUGATED
NM48-EMB-COR-BS



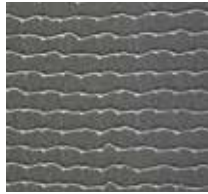
MILL ALUMINUM
CORRUGATED
NM48-EMB-COR-MILL



ALUMINUM
RONDO
NM48-ALU-RON



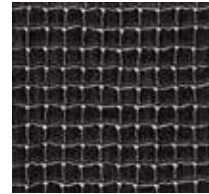
BRUSHED
ALUMINUM MESH
NM48-MESH-BA



BRUSHED
STAINLESS
MESH
NM48-MESH-BS



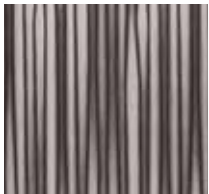
BLACK MESH
NM48-MESH-BK



ANTIQUE PEWTER
MESH
NM48-MESH-AP



BRUSHED
STAINLESS
REEDS
NM48-EMB-REED-BS



ANTIQUE PEWTER
REEDS
NM48-EMB-REED-AP



BRUSHED
ALUMINUM
RIDGES
NM48-RIDGES-BA



BRUSHED
STAINLESS
RIDGES
NM48-RIDGES-BS



Shown: Brushed Aluminum Ridges
NM48-RIDGES-BA

COLLECTION: COPPER

Sheet Size: 4' x 8' | Thickness: .035"

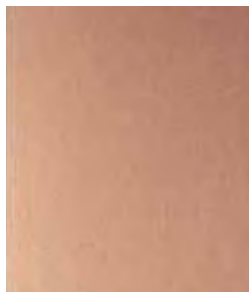
Copper laminates with selected popular embossed designs are lacquered and come with a clear protective film.



*COPPER
FINE HAMMERED*
NM48-CC-FHC



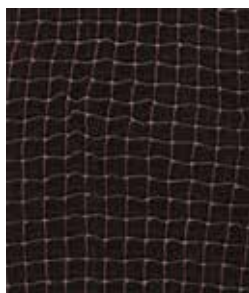
*COPPER
HAMMERED*
NM48-CC-HC



*MATTE
COPPER*
NM48-CC-MC



*ANTIQUE COPPER
FINE HAMMERED*
NM48-CC-AFHC



*ANTIQUE COPPER
MESH*
NM48-MESH-AC



*ANTIQUE COPPER
ORE*
NM48-CC-ACO

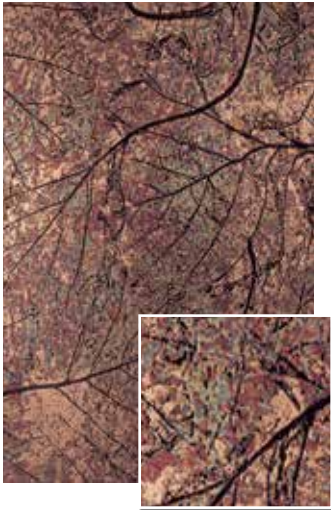


*Shown: Copper Fine Hammered
NM48-CC-FHC*

COLLECTION: UNIQUE ART

Sheet Size: 4' x 8' | Thickness: .035"

As the name implies, Unique Art Laminates are unique works of art that offer rich colors and metals in their design. They are hand painted by artists using techniques that allow for repeatability. Protected with a high-quality lacquer process to ensure durability, these laminates can be used in both low and high-traffic areas. Since each sheet is hand painted, it should be noted that slight differences can be seen from sheet to sheet.



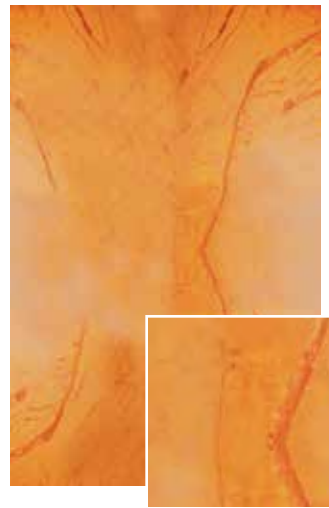
*PATINA AUTUMN
LEAVES*
NM48-UAC-AUTLEAVES



*Shown: Patina Autumn Leaves
NM48-UAC-AUTLEAVES*



*Shown: Patina Onyx
NM48-UAC-ONYX*



PATINA ONYX
NM48-UAC-ONYX



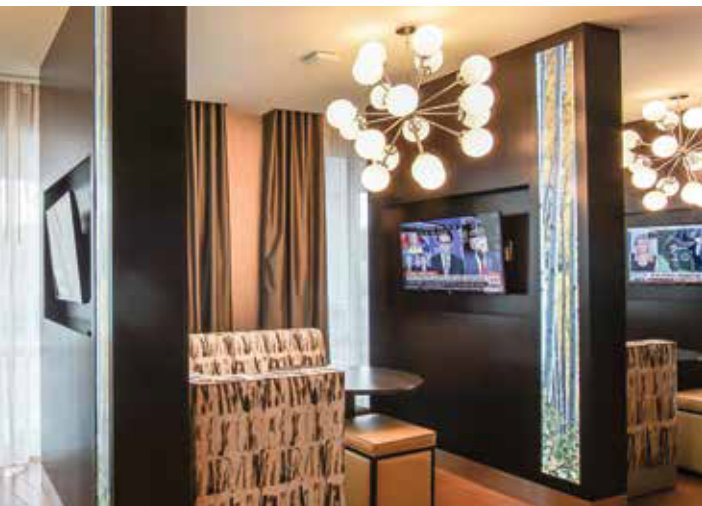
MADRID
NM48-UAC-MADRID



ILLUMINATED BACKSPASH KITS



Create a Unique Focal Point

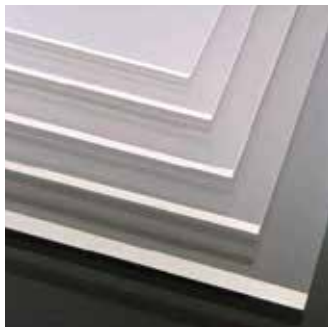




FROSTED LINE

Shown: Jacquard Frosted + Acrylic

5 Acrylic Thicknesses



*Our 4'x 8' acrylic panels are available in five thicknesses:
1/4", 3/8", 1/2", 3/4" & 1".*

The acrylic panels are perfect for divider panels, semi-private panels, wall panels, retail displays, inserts and more.

No matter how the panels are used to divide space, the collection's visual weightlessness doesn't divide attention.

It's truly the icing on the cake of any room design.

- *Easy-to-install*
- *Cut-to-size available*
- *High Impact, abrasion & chemical resistant properties*



4' x 8' Panels

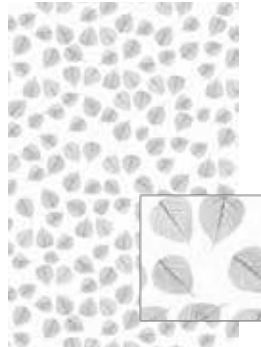
Thicknesses: 1/4", 3/8", 1/2", 3/4" & 1"

FROSTED LINE *Over 20 Exclusive Designs*

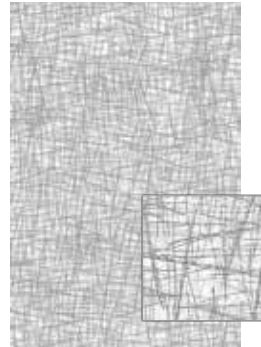
Frosted designs range from nature-inspired motifs like Abstract Flower Frosted and Pine Cones Frosted to minimalist patterns like Zoom Frosted and the intricate, woven design of Jacquard Frosted.



ABSTRACT FLOWER (*AF)



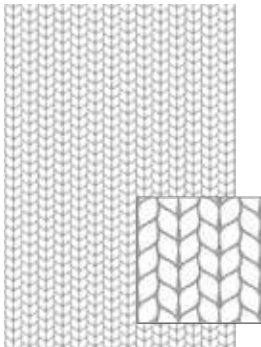
ASPEN LEAVES (*AL)



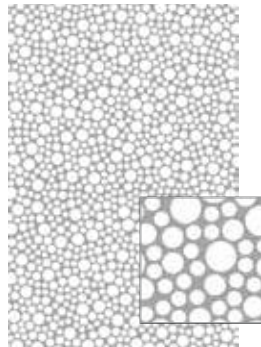
BIRCH CROSSHATCH (*BC)



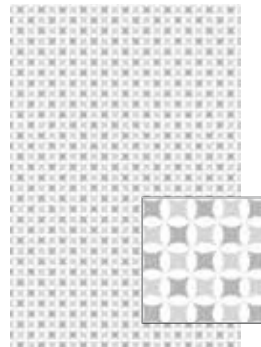
BLOCK-AID (*BA)



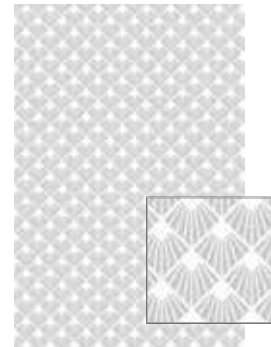
BRAIDS (*BR)



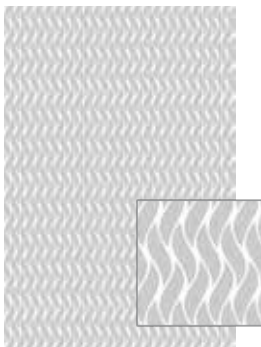
BUBBLE MATRIX (*BM)



CIRCLE STAR (*CS)



DECO (*DE)



FIRESTORM (*FS)



FLORAL FAN (*FF)



GROOVE (*GR)



JACQUARD (*JA)



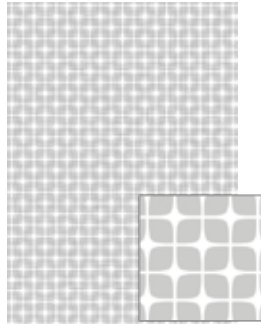
4' x 8' Panels

Thicknesses: 1/4", 3/8", 1/2", 3/4" & 1"

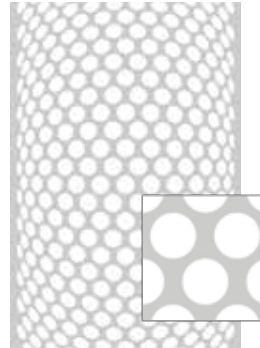
FROSTED LINE *Over 20 Exclusive Designs*



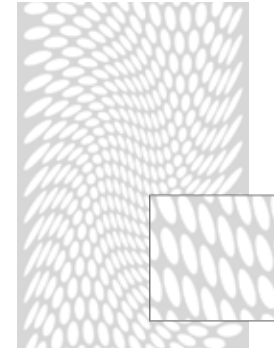
LOTUS (*LO)



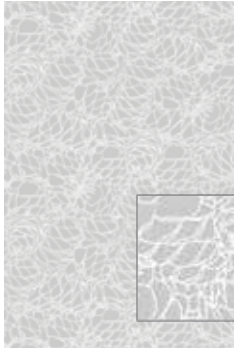
MID-CENTURY MODERN (*MM)



OPTICAL BULGE (*OB)



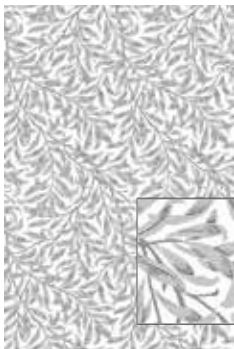
OPTICAL TWIST (*OT)



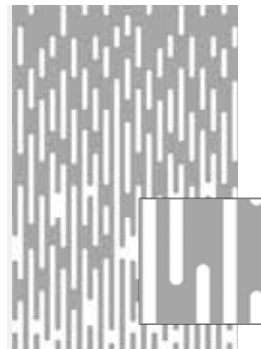
PINE CONES (*PC)



ROLLING WATER (*RW)



WILLOW (*WL)



ZOOM (*ZM)

Part #	Thickness
ACR125*	1/8"
ACR250*	1/4"
ACR500*	1/2"
ACR750*	3/4"
ACR100*	1"

Add pattern code to end of part number
ex: **ACR125-OB**



Shown: Zoom Frosted + Acrylic

Project Gallery



Shown: Firestorm + Acrylic



Shown: Mid-Century Modern + Acrylic



Shown: Pine Cones + Acrylic



Shown: Block Aid + Acrylic

BACKLIGHT LED LAMINATE KIT



SINGLE SIDED DESIGN
From Our Idea Library

Shown: Aspen Forest Mural



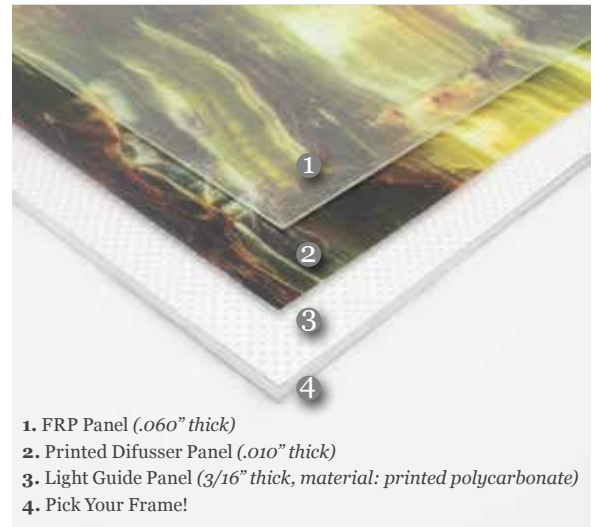
DOUBLE SIDED DESIGN
From Our Idea Library

Shown: Custom Aspen Forest

Our backlighting kit is a multi-layered, ultra-thin decorative laminate that emits light evenly across its surface and has impressive impact, scratch, chemical and abrasion resistant properties. Our kit is supplied with all necessary hardware for installation.

Product Features

- *The first ultra-thin, 1/4" (6mm) backlight system with no air gap required for LEDs. This system uses a light bar and light guide panel to produce luminance across a translucent surface.*
- *A one-of-a-kind product that combines art with lighting, creating a unique focal point for any home or business.*
- *A low voltage system that comes with the necessary electrical components to simply plug into a 110-volt receptor. Can also be hardwired for permanent installations by a local electrician.*
- *Suitable for most vertical and horizontal applications.*
- *Easily fabricated with standard woodworking tools such as routers, saws and drills.*
- *Easily used to backlight your own stone, acrylic or other translucent materials with its light guide panel.*



1. FRP Panel (.060" thick)
2. Printed Diffuser Panel (.010" thick)
3. Light Guide Panel (3/16" thick, material: printed polycarbonate)
4. Pick Your Frame!

How To Order Your Backlighting Kit

STEP 1:

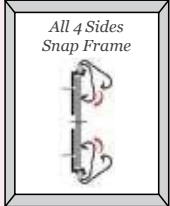
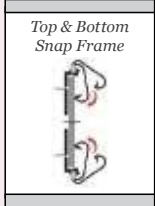


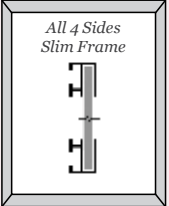
Choose Your Size Kit:

Part #	Size
LUM1648*	16" x 48"
LUM1696*	16" x 96"
LUM2448*	24" x 48"
LUM2496*	24" x 96"
LUM4848*	48" x 48"
LUM4896*	48" x 96"

Please Specify H x W For Your Graphic Direction

STEP 2:

Choose your frame kit option:

Option *A	Option *B	Option *C	Option *D	Option *S
 <p>All 4 Sides Snap Frame</p>	 <p>Top & Bottom Snap Frame</p>	 <p>Top Snap Frame & Bottom J-Channel</p>	 <p>Top & Bottom J-Channel</p>	 <p>All 4 Sides Slim Frame</p>
All 4 Sides		2 Sides		All 4 Sides

STEP 3:

Choose your graphic:

FROM OUR IDEA LIBRARY

Choose from our extensive idea library, where **hundreds of images** have been specifically developed to work with our products.

Visit outwaterphotogallery.com/laminates for our idea library

OR CUSTOM GRAPHICS



One of the advantages of our services is the ability to **customize the images** within our idea library or you can create your own unique artwork.



Shown: Custom Graphic

STEP 4:

Remember to specify left or right side power cord placement:

Part #	Size
LUM1648*	16" x 48"
LUM1696*	16" x 96"
LUM2448*	24" x 48"
LUM2496*	24" x 96"
LUM4848*	48" x 48"
LUM4896*	48" x 96"

Please Specify H x W For Your Graphic Direction

For more backlighting options, see pages R-107-120



Shown: Custom Graphic + Earth



Shown: Ginko Reeds Red



Shown: Custom + Aspen Forest



Shown: Custom Graphic

GRAPHIC WALL PANELS

Sheet Size:

4' x 8'

Thickness:

.045" (Fire Rated), .060" & .120"

Material: FRP

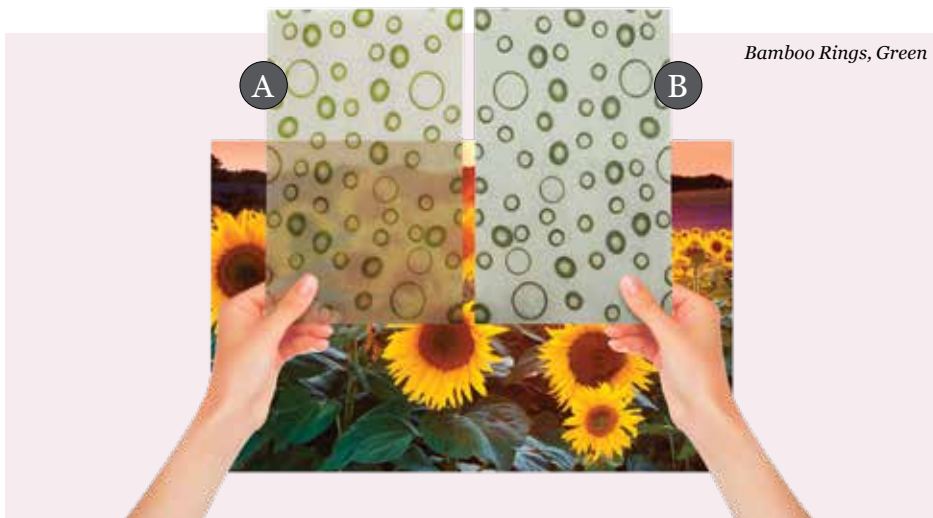
(Fiberglass Reinforced Plastic Panels)



Custom Art

Our Graphic Wall Panels are suitable for use as wall coverings, wainscoting, elevator walls, bar fronts, signage and POP displays.

Our Graphic Wall Panels are a translucent panel that pass sanitary codes and is easy to clean. It is suitable for wet environments such as commercial kitchens and baths. With its second surface imaging, and the addition of a white backer, this substrate resists scratching and is highly durable, making it the perfect wall protection in high traffic areas.



Bamboo Rings, Green

A Unbacked Translucent Panels

Unbacked translucent panels are imaged only.

Part #	Size
LTP48-045*	4' x 8' .045"TH
LTP48-060*	4' x 8' .060"TH
New! LTP48-120*	4' x 8' .120"TH

**Add pattern code to part number
ex: LTP48-60-BRG*

B Backed Translucent Panels

Backed translucent panels are panels with an added white backer.

Part #	Size
LTP48-045*-WB	4' x 8' .045"TH
LTP48-060*-WB	4' x 8' .060"TH
New! LTP48-120*-WB	4' x 8' .120"TH

**Add pattern code to part number
ex: LTP48-60-BRG-WB*

Fire Rated

How To Choose Your Graphics

FROM OUR IDEA LIBRARY

Choose from our extensive idea library, where **hundreds of images** have been specifically developed to work with our products.



ASPEN (*ASPEN)



BIRCH (*BIR)



DUNE GRASS (*DNGR)

Visit outwaterphotogallery.com/laminates for our idea library

OR CUSTOM GRAPHICS



One of the advantages of our services is the ability to **customize the images** within our idea library or you can create your own unique artwork.



PARTITIONS
From Our Idea Library

Section Dividers: Aspen - LTP48-060-ASPEN-WB
Wainscot: Dune Grass - LTP48-060-DNGR-WB



WAINSCOTING
From Our Idea Library

Aspen, Golf Yellow - LTP48-060-*



WALLCOVERINGS/WALL PROTECTION
Passes Sanitary Codes



POP DISPLAY
From Our Idea Library

Birch + Translucent Panels

Cable Rail Hardware

Available for the installation of our translucent panels. Our hardware systems are sleek, contemporary and attractive.

CABLE DISPLAY SYSTEMS



WALL-TO-WALL: **BIRCH**



WALL-TO-FLOOR: **SEDONA**



FLOOR-TO-CEILING: **ASPEN, GOLF YELLOW**



**ADJUSTABLE
TOP FIXING**
CSK-TF-*



**15 SERIES
SINGLE
HORIZONTAL
SIGN CLAMP**
CSK-SSGC-*



CABLE | 13'
CSK-CABLE



**ADJUSTABLE
BOTTOM FIXING**
CSK-BF-*

FINISHES = Polished Chrome (*PC), Satin Chrome (*SC)

An extensive line of panel hardware for a variety of display options is available. Please inquire for more information on all our mounting systems.

SUSPENDED SIGN CABLE



CLEOPATRA (see page O-50)



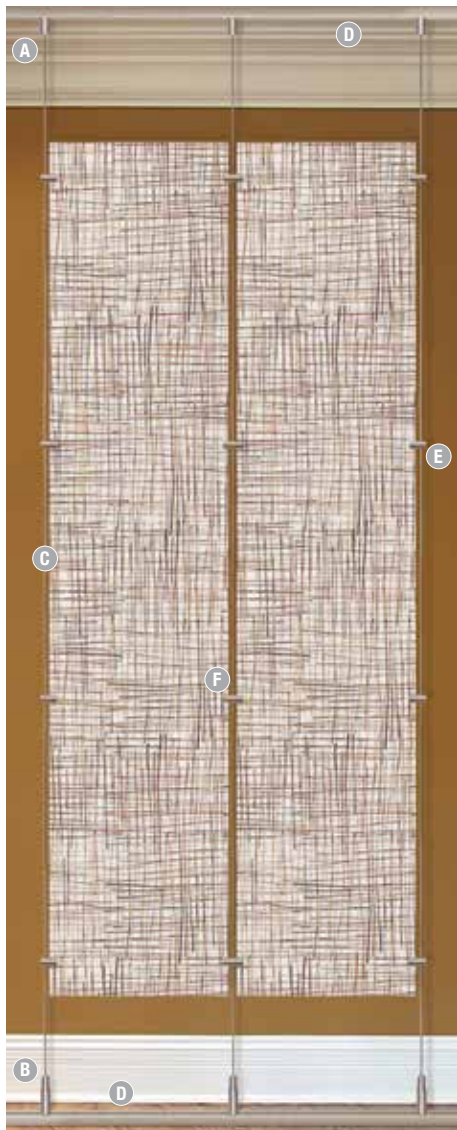
CEILING MOUNT TOP FIXING
CSK-CSTF-*



CABLE | 13'
CSK-CABLE



VERTICAL SINGLE SIGN CLAMP
CSK-CSSC-*

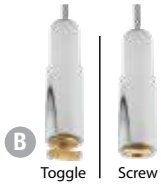


LINEAR REEDS CROSS (see page O-51)

CHANNEL MOUNT SIGNAGE



CHANNEL/CEILING TOP FITTING
Comes with both toggle and screw mount
CSK-CHTF-SC



CHANNEL/FLOOR BOTTOM FITTING
Comes with both toggle and screw mount
CSK-CHBF-*



CABLE | 13'
CSK-CABLE



ALUMINUM CHANNEL WITH END CAPS
6'6" length, comes with 2 end caps
CSK-ALU



SINGLE HORIZONTAL SIGN CLAMP
CSK-SSGC-*



DOUBLE HORIZONTAL SIGN CLAMP
CSK-DSGC-*

FINISHES = Polished Chrome (*PC), Satin Chrome (*SC)

An extensive line of panel hardware for a variety of display options is available. Please inquire for more information on all our mounting systems.

BRUSHED STAINLESS STEEL STANDOFFS



GREEN LEAVES
(see page O-53)

1-1/2" Diameter

- 2" barrel length
STDE-4864-BSS
- 3" barrel length
STDE-4896-BSS
- 4" barrel length
STDE-48128-BSS



1" Diameter

- 2" barrel length
STDE-3264-BSS
- 3" barrel length
STDE-3296-BSS
- 4" barrel length
STDE-32128-BSS

3/4" Diameter

- 2" barrel length
STDE-2464-BSS
- 3" barrel length
STDE-2496-BSS
- 4" barrel length
STDE-24128-BSS

For more Eco Series Standoff options, see page C-4

TOOLS



HEX KEYS
CSK-HEX



CABLE CUTTER
CSK-CUTTER

Roll~A~Lam

4 FT. WIDE ROLL UP TO 100 FT. LONG!!!

.030 THICK

ONE CONTINUOUS ROLL WITH A SIMPLE PEEL & STICK ADHESIVE

- **GREAT FOR:** Signage, Resurfacing, Bars, Display Cases, Back Drops And So Much More!
- **Recommended For Interior Use Only**
- Styrene substrate
- PSA backing
- Finishes are scratch & chemical resistant
- Can be easily cut with a utility knife (Always make cut on decorative side)
- It's essential that a primer (sealer) be applied to the substrate prior to applying the peel & stick laminate. (Surface Must Be Clean)
- For larger applications, we strongly recommend testing prior to installing. Samples are available please inquire.



EASY PEEL & STICK
Peel Backing Before Applying

Mirrored Finish

Brushed Steel

Brushed Copper

Antique Brass

Oil Rubbed Bronze



Part #	Description
RL-0108-M	Mirrored Finished
RL-0113-BS	Brushed Steel
RL-0055-BC	Brushed Copper
RL-0308-AB	Antique Brass
RL-0423-ORB	Oil Rubbed Bronze

*Sold by the square foot.
Must be purchased in a minimum of 4 sq. ft. increments*

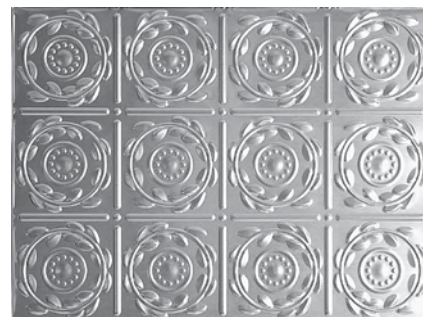
❖ Free Samples Available ❖

ENHANCE YOUR KITCHEN WITH A UNIQUE BACKSPLASH!

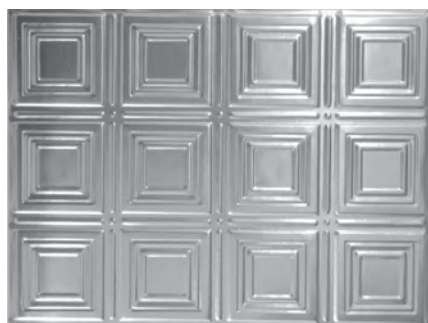


(SSBS-209 shown)

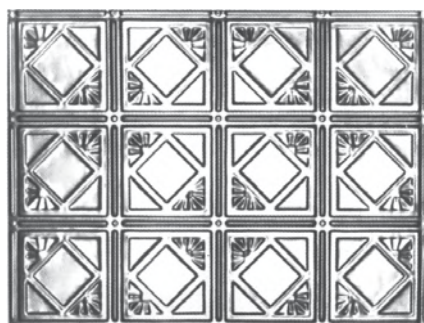
- Sheet size: 18-1/2" x 48-1/2"
- Use tin snips to trim panel to fit your measurements
- Available in 8 patterns shown below
- Easy to clean



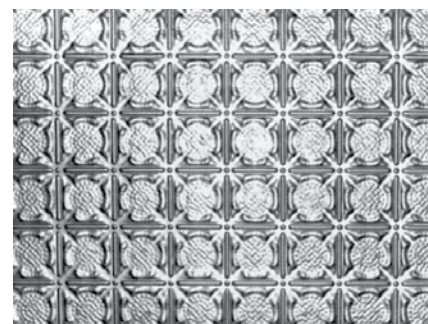
SSBS-208 (6" Multiple Plate)



SSBS-204 (6" Multiple Plate)



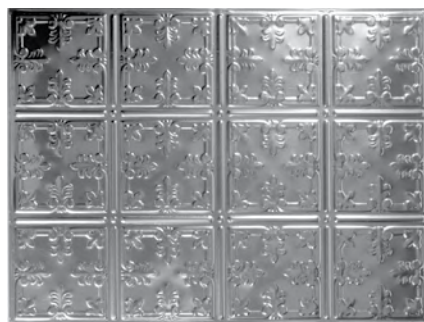
SSBS-207 (6" Multiple Plate)



SSBS-234 (3" Multiple Plate)



SSBS-209 (6" Multiple Plate)



SSBS-210 (6" Multiple Plate)



SSBS-235

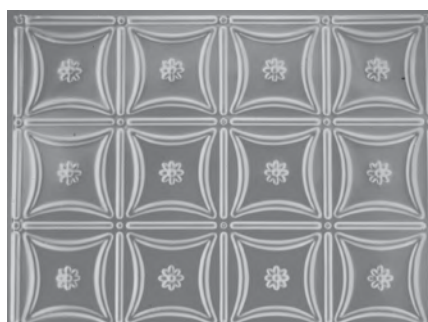
❖ **It is highly recommended that gloves are used for installation.** ❖

For more Backsplash products, see pages O-27~30, 54~55

CONE HEAD NAILS



1-1/4" LONG
1 LB. BOX
Coverage approx.
200 sq. ft. per box
SM-NAIL-LAQ



SSBS-200 (6" Multiple Plate)

FAUX STONE PANELS

2 ft. x 4 ft. High Density Polyurethane Panels

Achieve the look of: Realistic surfaces for a fraction of the cost with a new innovative building material!

STANDARD

Allows you to create your own design



Approximately 8 sq. ft.

INTERLOCKING

Allows for a totally seamless look

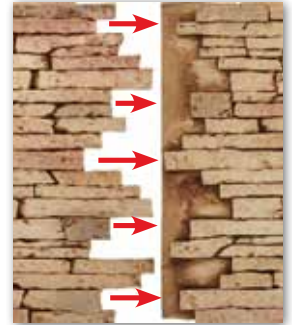


Approximately 7 sq. ft.

4pc Min.

Completely finished and perfect for indoor or outdoor use. Choose from our standard panels or our interlocking for an even more seamless look.

New Interlocking Panel Connection



INTERIOR

Highly durable, provides good value



EXTERIOR

Weather proof, UV stable



- No Finishing needed
- No Waterproofing
- Mortar-Free Installation
- Lightweight
- Impact resistant
- Inexpensive

FAUX STONE PANELS

Available in both:
Interlocking (approx. 7 ft.)
Standard (approx. 8 ft.)
Panels are approx.

DISCONTINUED
PLEASE CALL ONE OF OUR SALES ASSOCIATES FOR OTHER OPTIONS



4' Tall x 10" Wide x 10" Wide x 2" Thick



TPC-BRK1C WORKS WITH TPP-18, TPP-28
TPC-BRK2C WORKS WITH TPP-29
TPC-BRK3C WORKS WITH TPP-38
TPC-BRK4C WORKS WITH TPP-55, TPP-56

LEDGERS



4' Length x 3-1/2" Height x 2" Thick

Red Brick Lt. Grout (TPP-29) color: LIGHT GRAY LEG-LTG-13

SMALL CORNERS



4' Tall x 3" Wide (each side) x 1" Thick

Red Brick Dk. Grout (TPP-18 & TPP-28) color: DARK CHERRY COR-DKC9

Red Brick Lt. Grout (TPP-29) color: LIGHT GRAY COR-LTG-13

Brick Tan (TPP-38) color: BROWN COR-BR3

Due to photographic imaging, products may vary slightly in color

PLEASE NOTE: WHEN JOINING INTERLOCKING PANELS, THE ENDS MAY REQUIRE SOME FILLING TO FIT.

ADHESIVE & GROUT



Multi-Purpose Adhesive
MP-25-ADH
10.1 oz. cartridge

- Use as adhesive or filler
- Eco-friendly, low VOC's
- Fast cure
- Paintable
- Non-yellowing



CAULK-GUN



Color Matched Grout
10.3 oz. cartridge

Part #	Works With Part# TPP-
TPG-BROWN	17, 21, 23, 25, 31, 32, 37
TPG-BLACK	16, 18, 22, 26, 28, 33, 40
TPG-DARGRAY	20, 24
TPG-LIGGRAY	29, 39
TPG-TAN	38
TPG-WHITE	55, 56

2 FT. x 4 FT. DENSITY POLYURETHANE PANELS

4pc Min.

FAUX STONE PANELS

Available in both:
Interlocking (approx. 7 ft.)
Standard (approx. 8 ft.)

Panels are approx. 3/4" thick

STACKED STONE COLLECTION



STANDARD PANELS AVAILABLE IN:
Stacked Stone Tan - TPP-23,
Stacked Stone Gray - TPP-22,
Stacked Stone Light Tan, TPP-21



STACKED STONE CORNERS

4' Tall x 3" Wide (each side)
x 1" Thick

Available in Light Tan, Tan,
Light Gray, Gray

- COR-LTT-SS (Lt. Tan)
- COR-TAN-SS (Tan)
- COR-LTG-SS (Lt. Gray)
- COR-GRAY-SS (Gray)

LEDGERS



4' Length x 3-1/2" Height x 2" Thick

Stacked Stone Tan
(TPP-23) Color:
DARK BROWN LEG-DKB7

Stacked Stone Gray
(TPP-22) Color:
DARK GRAY LEG-DKG11

Stacked Stone Light Tan
(TPP-21) Colors:
CREAM LEG-CRM5
LIGHT TAN LEG-LTT-15

SMALL CORNERS



4' Tall x 3" Wide (each side)

Stacked Stone Tan
(TPP-23) Color:
DARK BROWN LEG-DKB7

FAUX STONE PANELS

Available in both:
Interlocking (approx. 7 ft.)
Standard (approx. 8 ft.)

Panels are approx. 3/4" thick

STONE WALL COLLECTION



Stonewall Gray (TPP-26)

Stonewall Light Tan (TPP-37)

LEDGERS



4' Length x 3-1/2" Height x 2" Thick

Stonewall Tan (TPP-17) Colors:
DARK BROWN LEG-DKB7
CREAM LEG-CRM5
LIGHT TAN LEG-LTT-15

Stonewall Gray
(TPP-16) Color:
DARK GRAY LEG-DKG11

SMALL CORNERS



4' Tall x 3" Wide (each side) x 1" Thick

Stonewall Tan (TPP-17) Colors:
DARK BROWN COR-DKB7
LIGHT TAN COR-LTT-15

Stonewall Light Tan
(TPP-37) Color:
CREAM COR-CRM5

Stonewall Gray
(TPP-16) Color:
DARK GRAY COR-DKG11

LARGE CORNERS

2 ft. High x 10" Wide x 10" Wide x 2" Thick



Stonewall Tan
TPC-STWTC
WORKS WITH
TPP-17, TPP-25

Stonewall Gray
TPC-STWGC
WORKS WITH
TPP-16, TPP-26

Stonewall
Light Gray
TPC-STWLG
WORKS WITH
TPP-20, TPP-24

Stonewall
Light Tan
TPC-STWLTC
WORKS WITH
TPP-37

Due to photographic imaging,
products may vary slightly in color

Request a FREE 3" x 3" Sample (up to 3 pcs)

PLEASE NOTE: WHEN JOINING INTERLOCKING PANELS, THE ENDS MAY REQUIRE SOME FILLING TO FIT.

Flexible Stone Veneer Sheets

2' x 4' or 4' x 8' x 1MM - 2MM Thick



Our Stone Veneer Sheets are made from natural stones. This means each sheet will vary as every piece consists of a thin layer of real stone and no two stones are exactly the same. The flexible Stone Veneer Sheets are backed by a polymer composite, which gives the sheet their flexibility and strength while keeping the weight to a minimum.

Can be applied over concrete, ceramic, wood, metal, plywood, fiberglass, backer board, tile, dry wall, painted surfaces, MDF, Masonite®, door skin, cabinetry and many other substrates.

- 
Flexible
- 
Energy saving
- 
Impact resistant
- 
Clean work
- 
Water resistant
- 
Quick installation
- 
Light weight
- 
Easy to carry
- 
Resists extreme climate conditions



Silver Shine Gold



Black Slate



Copper

The colors may vary from the actual product shown.

- Applications**
- Architectural
 - Interior & Exterior
 - Doors & Cabinets
 - Furniture
 - Trim & Backsplashes
 - Marine & RV
 - Kitchens
 - Bathrooms
 - Flooring
 - Signage



BLACK SLATE
2' x 4' 4' x 8'
FSV24-20 FSV48-20



SILVER SHINE
2' x 4' 4' x 8'
FSV24-21 FSV48-21



SILVER SHINE GOLD
2' x 4' 4' x 8'
FSV24-22 FSV48-22



INDIAN AUTUMN
2' x 4' 4' x 8'
FSV24-23 FSV48-23



COPPER
2' x 4' 4' x 8'
FSV24-24 FSV48-24



STAR GALAXY
2' x 4' 4' x 8'
FSV24-25 FSV48-25



TAN
2' x 4' 4' x 8'
FSV24-26 FSV48-26

Flexible Translucent Stone Veneer Panels

4' x 8' x 2MM - 4MM Thick
(Clear Backing)

These translucent panels appear as a natural stone panel but once you back light them, a warm light shines through the surface for a new look.
(These panels are much more rigid than the regular flexible sheets).



Indian Autumn with Backlight



INDIAN AUTUMN

TSV48-23

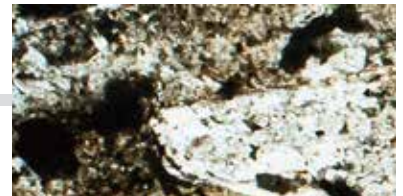


with Backlight



OCEAN GREEN

TSV48-27



The colors may vary from the actual product shown.



Ocean Green with Backlight

*For backlighting solid surfaces,
use our flexible & cuttable LED*

Auragami™

See pages R-109~111



For additional Backlighting, see pages R-107~120



Wood over wood laminate is composed of two wood veneer faces permanently bonded with the grain of the face running perpendicular to the grain of the back. The result is a dimensionally stable product which minimizes the wood veneer's tendency to expand and contract across the grain.

Species



Cherry (Flat)



Maple (Flat)



Red Oak (Flat)



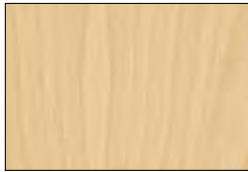
Rustic White Oak (Random)



Walnut (Flat)



Walnut (Quartered)



White Birch (Rotary)



White Oak (Flat)



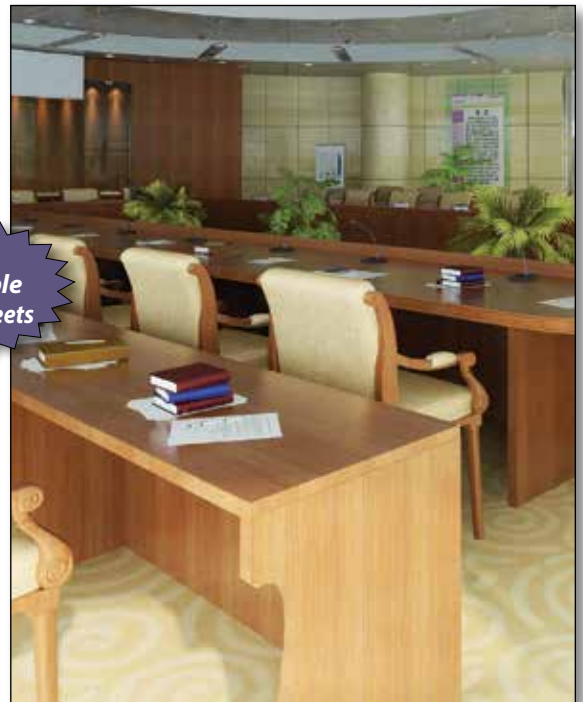
White Oak (Rift)

The colors may vary from the actual product shown.



- 4' x 8' sheets
- No bubbling
- No ridging
- No phenolic or foil backer lines
- Flexibility
- 100% surface sanded
- .035mm thick

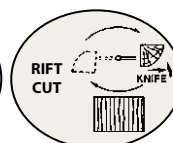
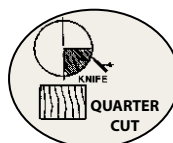
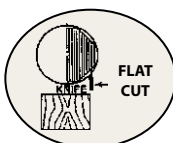
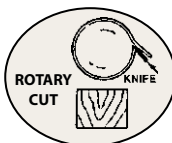
Also Available
2' x 8' Sheets



Part #	Wood Species	Type Of Cut
WOW48CH	Cherry	Flat
WOW48MP	Maple	Flat
WOW48RO	Red Oak	Flat
WOW48RWO	Rustic White Oak	Random
WOW48WAL	Walnut	Flat
WOW48WAL-Q	Walnut	Quartered
WOW48WB	White Birch	Rotary
WOW48WO	White Oak	Flat
WOW48WO-RC	White Oak	Rift

TYPES OF VENEER CUTS

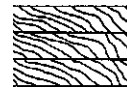
The manner in which veneers are cut is an important factor in producing the various visual effects obtained. Two logs of the same species, but with their veneers cut differently, will have entirely different visual characteristics even though their colors are similar.



Other Types Of Veneer Matches Available



Random Matching



Slip Matching

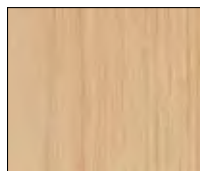
Please Note: Do not apply to sheet rock or drywall. Any exterior surface plastic laminate or melamine board. Apply 2 coats of contact adhesive to porous substrates.

Wood Veneer Sheets - 10 Mil Paper Backing

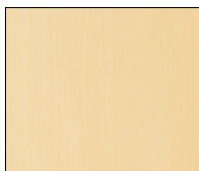
Species



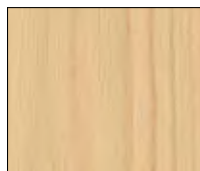
Cherry (Flat)



Hickory (Flat)



Maple (Flat)



Red Oak (Flat)



Rustic White Oak (Random)



Walnut (Flat)



Walnut (Quartered)



White Ash (Flat)



White Birch (Rotary)



White Oak (Flat)



White Oak (Rift)

The colors may vary from the actual product shown.



• 4'x 8' sheets

- .023"-.027" thick genuine wood veneer
- Book matched
- Sanded & tenderized
- Veneer is permanently bonded under heat and pressure to the paper backing
- 10 mil paper backing



Part #	Wood Species	Type Of Cut
CV48CH	Cherry	Flat
CV48HC	Hickory	Flat
CV48MP	Maple	Flat
CV48RO	Red Oak	Flat
CV48RWO	Rustic White Oak	Random
CV48WAL	Walnut	Flat
CV48WAL-Q	Walnut	Quartered
CV48WA	White Ash	Flat
CV48WB	White Birch	Rotary
CV48WO	White Oak	Flat
CV48WO-RC	White Oak	Rift

Products On This Page Are Book Matched & Sheet Matched

Standard Wood Veneer Edging



- Non Adhesive Fleece Tape or Pre-Glued Iron On Tape
- Finger Jointed, Continuous Rolls
- Fine Sanded
- Stainable

7/8" Fleece Backed Tape • 500 Ft. Rolls

Part #	Wood Species
CT875CH	Cherry
CT875MP	Maple
CT875RO	Red Oak
CT875WAL	Walnut
CT875WA	White Ash
CT875WB	White Birch
CT875WO	White Oak

13/16" Pre-Glued Tape • 250 Ft. Rolls

Part #	Wood Species
CT812CH	Cherry
CT812MP	Maple
CT812RO	Red Oak
CT812WAL	Walnut
CT812WA	White Ash
CT812WB	White Birch
CT812WO	White Oak

PRE-FINISHED MAPLE

Part #
CT875MP-PRE

Part #
CT812MP-PRE

Note: Other sizes and wood species are available. Please inquire for details on your requirements.

NOTE: OTHER SIZES AND BACKERS ARE AVAILABLE. SOME MINIMUMS APPLY. PLEASE INQUIRE.

Please Note: Do not apply to sheet rock or drywall. Any exterior surface plastic laminate or melamine board. Apply 2 coats of contact adhesive to porous substrates.



Shown:
Ebony, Macassar

4' x 8' Sheets

Nature's Best Exotic Species...



Mother nature loves our Natural Wood Veneers. These reconstituted veneers are cut exclusively from rapidly renewable trees, promoting sustainability and forest preservation.

In addition to being green, Natural Wood Veneers provides enhanced consistency in grain and color...great for large projects requiring sequences of 100 sheets or more.

Natural Wood Veneer is backed with 10 mil paper to create a strong curvable sheet.

- ASTM E-84 Class "A" fire-rated
- Comes standard on 10 mil paper

USE

Millwork
Interior Design
Furniture & Fixtures

Cabinetry
Elevators & Staircases
Woodworking



Shown: Zebrawood

Benefits...

- **No bleed through:** Helps prevent moisture bleed through, protecting both your adhesion to the substrate and your stain + finish coats.
- **No movement:** "Stress-relieved" through a tenderizing process that breaks up the wood fiber, crating a relaxed sheet that will lay flat.
- **No sequence breaks:** Remarkable consistent...sheet #1 will look like sheet #600.
- **No cracking:** Extremely curvable, allowing for use in tight radius applications.
- **No bubbles:** When applied properly, our veneers are constructed to minimize substrate imperfections from showing through.
- **No waiting:** Arrives sanded, trimmed, inspected and ready to use.
- **No waste:** 100% usable, minimizing product cost, freight and storage.

Available Exotic Species

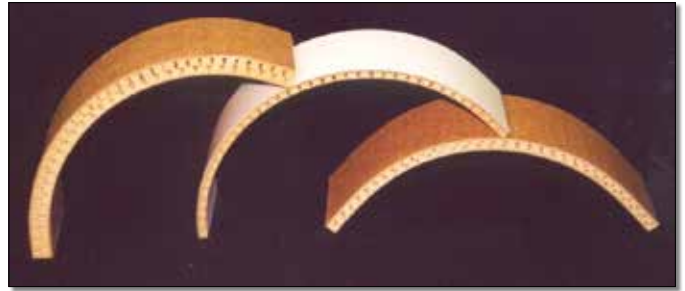


The colors may vary from the actual product shown.

Part #	Adhesive	Wood Species	Type Of Cut
FH48A-BKEBONY-Q	W/Adhesive	Ebony, Black	Quartered
FH48-BKEBONY-Q	W/O Adhesive	Ebony, Black	Quartered
FH48A-BRNEBONY-Q	W/Adhesive	Ebony, Brown	Quartered
FH48-BRNEBONY-Q	W/O Adhesive	Ebony, Brown	Quartered
FH48A-MACEBONY-Q	W/Adhesive	Ebony, Macassar	Quartered
FH48-MACEBONY-Q	W/O Adhesive	Ebony, Macassar	Quartered
FH48A-MB	W/Adhesive	Maple	Birdseye
FH48-MB	W/O Adhesive	Maple	Birdseye
FH48A-SANMAH-Q	W/Adhesive	Mahogany, Santos	Quartered
FH48-SANMAH-Q	W/O Adhesive	Mahogany, Santos	Quartered
FH48A-ANROSEWOOD	W/Adhesive	Rosewood, Andes	Flat
FH48-ANROSEWOOD	W/O Adhesive	Rosewood, Andes	Flat
FH48A-EROSEWOOD-Q	W/Adhesive	Rosewood, East Indian	Quartered
FH48-EROSEWOOD-Q	W/O Adhesive	Rosewood, East Indian	Quartered
FH48A-TEAK	W/Adhesive	Teak	Flat
FH48-TEAK	W/O Adhesive	Teak	Flat
FH48A-GOLDTEAK-Q	W/Adhesive	Teak, Golden	Quartered
FH48-GOLDTEAK-Q	W/O Adhesive	Teak, Golden	Quartered
FH48A-TEAK-Q	W/Adhesive	Teak	Quartered
FH48-TEAK-Q	W/O Adhesive	Teak	Quartered
FH48A-WENGE-Q	W/Adhesive	Wenge	Quartered
FH48-WENGE-Q	W/O Adhesive	Wenge	Quartered
FH48A-ZEBRA-Q	W/Adhesive	Zebrawood	Quartered
FH48-ZEBRA-Q	W/O Adhesive	Zebrawood	Quartered

ECONOKORE

- Economical substitute for bending panels
- No sanding or patching required
- Unique 2-ply product that gives you the ability to form curves with less labor and less cost
- Made of processed MDF core with a high density overlay
- Can bend to a 8" to 10" radius

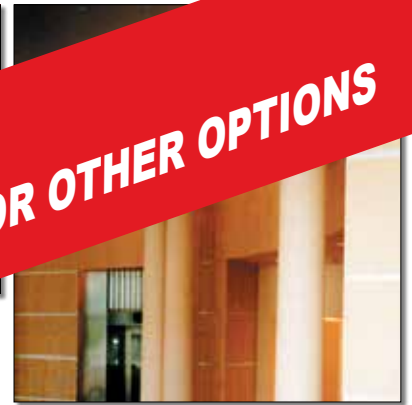
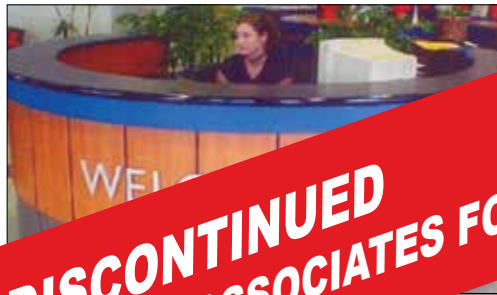


Part #	Thickness	Sheet
ECK-14V	1/4"	8' x 4'
ECK-38	3/8"	4' x 8'
ECK-38V	3/8"	8' x 4'

Skid Fee

KERFKORE®

- A flexible product that can be formed into curves and radii as small as 3-1/2"
- Consists of a core of kerfed particleboard, plywood or MDF with a very flexible latex impregnated face paper
- Allows face material of HPL, veneers, metals and other semi-rigid materials
- Also available in a two-sided product. It is made similar to the single-sided product but has a phenolic impregnated backer to allow the user to use it on both sides.
- An excellent choice for active areas.



DISCONTINUED
PLEASE CALL ONE OF OUR SALES ASSOCIATES FOR OTHER OPTIONS

Part #	Thickness	Sheet
KFK-14S	1/4"	4' x 8' Single Side
KFK-12S	1/2"	4' x 8' Single Side
KFK-34S	3/4"	4' x 8' Single Side

Skid Fee

FIRST Laminate Flat ~ Then Shape



Step 1

Lay Kerfkore® on a flat surface. Remove all dust and debris for a clean surface.



Step 2

Apply glue to black latex paper side. Adhere pre-cut laminate or veneer.



Step 3

Apply pressure to laminate to adhere.



Step 4

Trim edges, if necessary.



Final Step

Finished product - now you can shape for desired application.

SHAPE FIRST ~ THEN LAMINATE

FOAMKORE

- A new lightweight alternative to traditional panels
- Foamkore is appropriate for use in areas where weight is a concern
- Up to 80% reduced weight when compared to MDF, plywood or particle board
- Foamkore is constructed with a polystyrene foam core with higher density face panels to provide a strong lightweight panel with structural integrity
- The use of glue, staples, nails, screws and other similar fasteners will allow the panel to be physically and structurally attached to other materials

Part #	Description	Face & Back
FK-34HB	4' x 8' x 3/4"	.080 Hardboard
FK-1HB	4' x 8' x 1"	.080 Hardboard
FK-15HB	4' x 8' x 1-1/2"	.080 Hardboard
FK-34FB	4' x 8' x 3/4"	1/8" Fiberboard
FK-1FB	4' x 8' x 1"	1/8" Fiberboard
FK-15FB	4' x 8' x 1-1/2"	1/8" Fiberboard

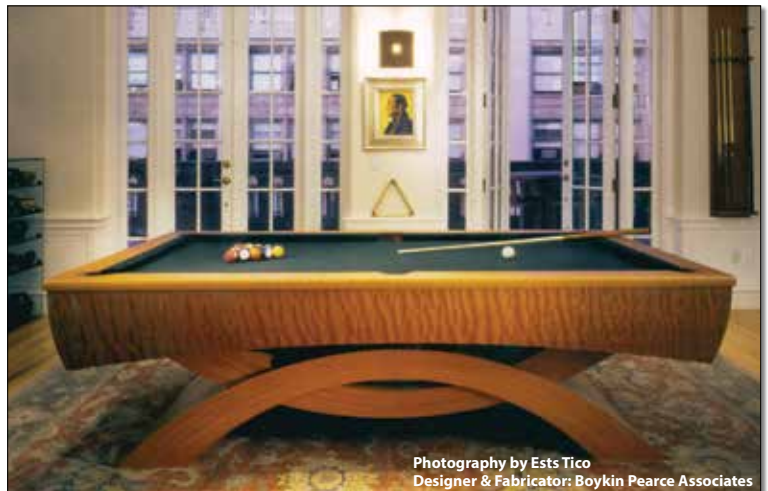


DISCONTINUED
PLEASE CALL ONE OF OUR SALES ASSOCIATES FOR OTHER OPTIONS

TIMBERFLEX

- Smooth 1/8" poplar face that's ready to paint, stain or cover with laminate without the need for patching and sanding
- Panels bend uniformly without dips, valleys or hard spots
- Panels are dimensionally sized to have the same thickness throughout to assure excellent seam hiding characteristics
- Can bend to a 5" radius

Part #	Thickness	Sheet
TF-12V	1/2"	8' x 4'
TF-34	3/4"	4' x 8'
TF-34V	3/4"	8' x 4'



Photography by Ests Tico
 Designer & Fabricator: Boykin Pearce Associates

Skid Fee



ACOUSTI-PANEL

SLATTED WOOD WALL PANELS

Our wood slat panels are beautifully crafted wall and ceiling panels boasting the highest quality finishes in the industry. Our panels use an "extreme matte lacquer" finishing process which needs no further oils, waxes, stains or lacquers to prevent fading, splintering or cracking.

Ready to quickly and easily transform your space with contemporary flair and mid-century styling straight out of the box.

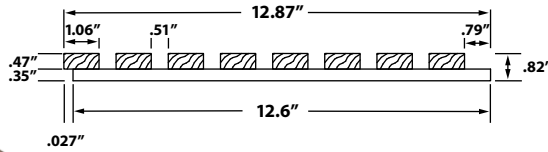
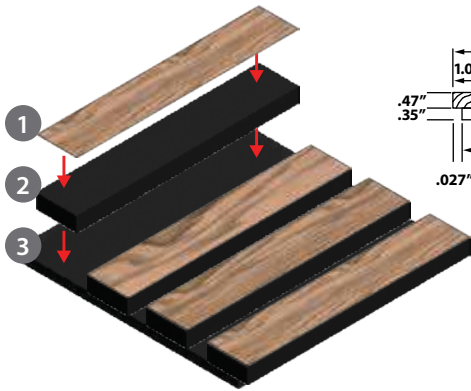
Available in a choice of 3 beautiful wood tone oak veneers, lamella slats are mounted to acoustic black felt, improving sound quality while adding texture to a single wall or entire room.

- Modern, elegant wood veneer slats on 3/8" black acoustic felt offer sound dampening qualities for a clean, contemporary look.
- Stocked in 3 unique, eye-catching finishes.
- Fully sustainable
- Extreme matte lacquer finish prevents fading, cracking & chipping. No additional finishing required.
- Easy installation. Ready to transform your interior straight out of the box. (Instructions Included)
- Use on walls and ceilings vertically or horizontally.
- Seamless joining.
- Free continental USA shipping.

Each box contains 2 panels measuring 94.5"L x 12.6"W x.82"D each.

New

Anatomy of ACOUSTI-PANEL



1. Extreme Matte Lacquer Finished Veneer
2. Painted Wood Lamella Slats
3. 3/8" Black Acoustic Felt Backing

Offered in 3 Finishes

Each box contains 2 panels measuring 94.5"L x 12.6"W x .82"D each.



Oak
AWP-2X8-OAK



Walnut
AWP-2X8-WAL



Black Diamond
AWP-2X8-BDIA

No Additional Finishing Required

Custom Finishes Available



Minimums Apply. Please Inquire.



Fluted Wall Cladding



TRANSFORM YOUR WALL INTO
A BEAUTIFUL ACCENT PIECE.



ECO-FRIENDLY



LOW MAINTENANCE



WATER RESISTANT



DURABLE



ANTI-MOLD



ANTI-TERMITE

See additional information and inspiration online.



INNOVATIVE

STYLISH

CURRENT

FWC-159

FWC-200C

FWC-188

SIGNATURE SERIES

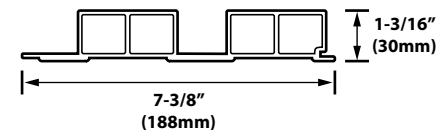
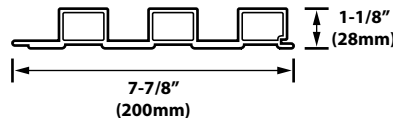
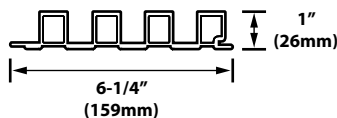
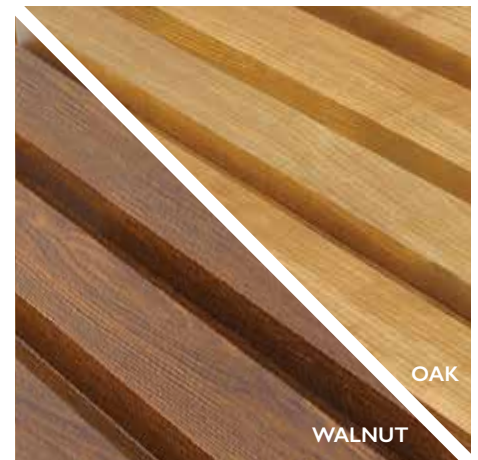
PREMIERE SERIES

GRANDE SERIES

Slim and subtle. Adding the perfect texture and rhythm to your walls.

A well balanced harmony of light and shadow.

Bold and elegant for a striking interior.



- Sold as 9 feet of usable length / Shipped as 9 ft 2 inch actual. Each sheet is designed with 1 inch of trim space top and bottom.
- Made from eco-friendly wood/plastic composite material

- Available in Oak and Walnut
**FWC-159 also available in White. White can be painted; Krylon spray suggested. Samples available for testing.*

- Quick and easy-to-install
- Use vertically and horizontally
- Laminated surface finish



CAP MOULDING

Cap moulding is available in two sizes and four finishes.

WCC-1X1 (1" x 1")
WCC-134 (1-3/4" x 1-3/8")



WALL CLIPS

WC-CLIP

See additional information and inspiration online.



NATURAL ELEMENTS FLEXIBLE WOOD TAMBOUR PANELS



Available in a cost effective line of Internationally produced North American Hardwoods along with our line of panels proudly made in the USA.

Flexible fluted wall panels allow for graceful curves or flat surface applications.

This decorative surface can be used for walls, ceilings, wainscoting, pole wraps, bar fronts, furniture, drawer fronts, and tambour doors.

The natural tone, grain, and texture of wood tambour provides a sense of warmth and contemporary style.



Each wood slat is hand-selected to ensure you receive the best quality wall panel.

Ready to stain, paint or clear coat.

Much easier to work with than most wood wall cladding. To install, simply apply construction adhesive to the back of the tambour sheet and mount it onto your surface.

Can be trimmed with fine tooth saw or cut length-wise with utility knife.

Slats run in the longer direction.



NATURAL ELEMENTS VENEER WALL PANELS



Internationally produced from North American Hardwoods

- Nominal 4' x 8' Sheets (Actual Size: 47-3/4" x 96")
- Available in Unfinished Red Oak, White Oak, Maple
- Bamboo Fiber Reinforced Paper Backer
- MDF Core



Tambour sheets can bend at slat joints. See minimum radii.



• 1" Min. Radius

1/2" Slat Pattern
NEV-231-MP Maple
NEV-231-RO Red Oak
NEV-231-WO White Oak
 Groove: 30°
 Height: 5/32"
 Slat Width: 1/2"
 Shown: White Oak

• 2" Min. Radius

3/4" Slat Pattern
NEV-331-MP Maple
NEV-331-RO Red Oak
NEV-331-WO White Oak
 Shown: Maple

NEV-331-WO-BK White Oak w/Black V-Grooves

NEV-331-WO/C White Oak w/Canvas Backer - perfect for appliance garage doors
 Groove: 30°
 Height: 5/32"
 Slat Width: 3/4"

• 3" Min. Radius

1" Slat Pattern
NEV-431-MP Maple
NEV-431-RO Red Oak
NEV-431-WO White Oak
 Shown: Red Oak
 Groove: 30°
 Height: 5/32"
 Slat Width: 1"



NATURAL ELEMENTS SOLID WOOD WALL PANELS



Internationally produced from North American Hardwoods

- Nominal 1' x 8' Sheets
- Available in Unfinished Red Oak, White Oak, Maple, Pine/Paintable
- Bamboo Fiber Reinforced Paper Backer



Tambour sheets can bend at slat joints. See minimum radii.

Bamboo Fiber Reinforced Paper Backer



Slat Flat Pattern
NES-373-MP Maple
NES-373-RO Red Oak
NES-373-WO White Oak

Shown: Maple
 16 Slats per panel
• 7.5" Min. Radius

Groove: 60°
 Slat Width: 3/4"
 Height: 3/16"

Half Round Pattern
NES-383-MP Maple
NES-383-RO Red Oak
NES-383-WO White Oak
NES-383-PP Pine/Paintable

Shown: Maple
 16 Slats per panel
• 4" Min. Radius

Height: 3/8"
 Slat Width: 3/4"

Half Round Pattern
NES-483-1-MP Maple
NES-483-1-RO Red Oak
NES-483-1-WO White Oak

Shown: White Oak
 12 Slats per panel
• 8" Min. Radius

Height: 3/8"
 Slat Width: 1"

Pencil Pattern
NES-311-MP Maple
NES-311-RO Red Oak
NES-311-WO White Oak
NES-311-PP Pine/Paintable

Shown: Red Oak
 16 Slats per panel
• 8" Min. Radius

Slat Bend
 .153"
 3/8"
 3/4"

Square Pattern
NES-1624-MP Maple
NES-1624-RO Red Oak
NES-1624-WO White Oak

Shown: Red Oak
 8 Slats per panel
• 10" Min. Radius

Slat Bend
 1/2"
 3/4"
 1/4"
 1-1/2"
 3/4"



NATURAL ELEMENTS VENEER WALL PANELS



Made from **AMERICAN** Veneers

- 4' x 8' Sheets
- Flat Cut Profile
- Brown Paper Backer

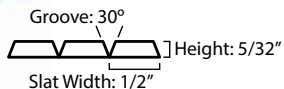
• **MDF Core**



Shown:
Red Oak

• **1" Min. Radius**

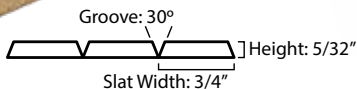
- V1231-RO** Red Oak
- V1231-MP** Maple
- V1231-WO** White Oak



Shown:
White Oak

• **2" Min. Radius**

- V1331-RO** Red Oak
- V1331-MP** Maple
- V1331-WO** White Oak



Tambour sheets can bend at slat joints.
See minimum radii.

• **MDF/Hardwood Core[^]**

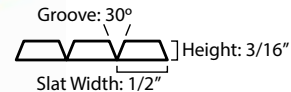
[^] Core material varies with each production run.



Shown:
Red Oak

• **2" Min. Radius**

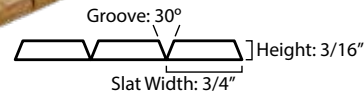
- 231-A** Red Oak
- 231-A-MP** Maple



Shown:
Red Oak

• **2" Min. Radius**

- 331-A** Red Oak
- 331-A-MP** Maple



Tambour sheets can bend at slat joints.
See minimum radii.



NATURAL ELEMENTS SOLID WOOD WALL PANELS



Made from **AMERICAN** Solid Hardwoods

- 1' x 8' Sheets
- Available in Unfinished Red Oak, Maple & Cherry

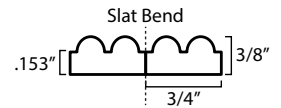


Tambour sheets can bend at slat joints. See minimum radii.

- Brown Latex Permeated Paper backed for added stretch
- 6" Min. Radius



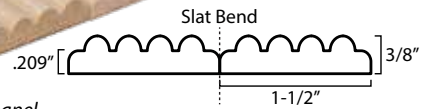
Pencil Pattern
S1311-MP Maple



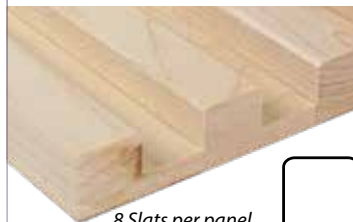
16 Slats per panel



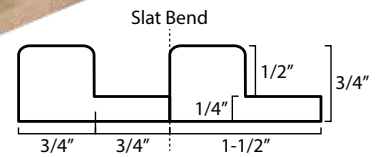
Pencil Pattern
S1611-MP Maple



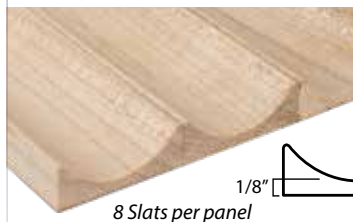
8 Slats per panel



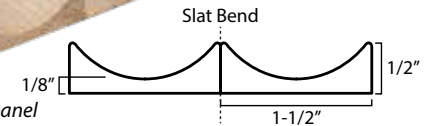
Square Pattern
S1624-MP Maple



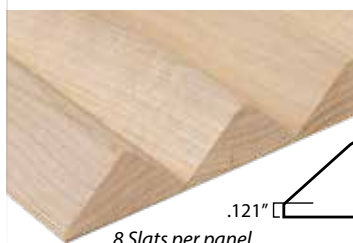
8 Slats per panel



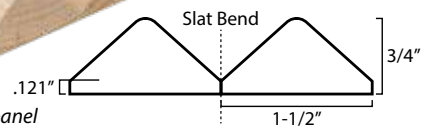
Concave Pattern
S1655-MP Maple



8 Slats per panel



Triangle Pattern
S1678-MP Maple



8 Slats per panel

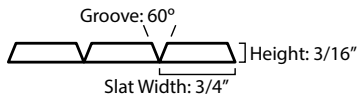
• Black Cloth Backer



- 7.5" Min. Radius
- Flat Pattern**

- 373-CH** ^ Cherry
- 373-MP** ^ Maple
- 373-RO** ^ Red Oak

^ - Nominal 8 ft. long (Actual 95 in.)



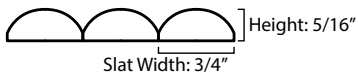
Shown: Red Oak



- 4" Min. Radius
- Half Round Pattern**

- 383-MP** ^ Maple
- 383-RO** ^ Red Oak

^ - Nominal 8 ft. long (Actual 95 in.)



Shown: Maple



FLEXIBLE REAL GLASS MIRROR SHEETS

CLASS A FIRE RATING

COLORS AVAILABLE IN CLEAR MIRROR OR SMOKE MIRROR

(finish may vary from sheet to sheet)

SHEET SIZE:

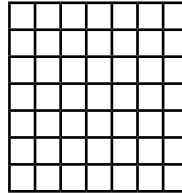
23-1/2" x 23-1/2" (3.84 SQ. FT.) x
Approx. 3/32" Thick

- Adaptable to mostly any wall surface configuration.
- Each edge of mirror is hand radius for a satin like finish.
- Fabric backing makes installation simple.

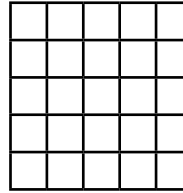


Part #	Color
GM5X5-101	Clear
GM5X5-130	Smoke
GM1X1-101	Clear
GM1X1-130	Smoke
GM5X1-101	Clear
GM5X1-130	Smoke
GM5X2-101	Clear
GM5X2-130	Smoke

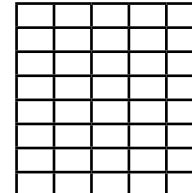
GM5X5-1/2" SQUARES



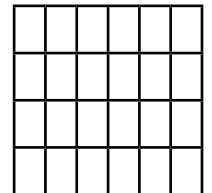
GM1X1-1" SQUARES



GM5X1-1/2" x 1" RECTANGLES



GM5X2-1/2" x 2" RECTANGLES



Rolled Cork - Facing Quality



Renewable Resources

- Ideal for bulletin board/wall facing applications
- Rolls have a 48" usable width, (Actual width is nominal 49")



TECHNICAL SPECIFICATIONS

MATERIAL: CORK BINDER: POLYURETHANE
STANDARD RANGE: FACING QUALITY GRANULE SIZE: 1-3mm

TYPICAL VALUES

DENSITY MINIMUM Kg/m3 (pcf)	200 (12.5)
COMPRESSION %	20-40
RECOVERY MINIMUM %	70
TENSILE STRENGTH (*) KPa (psi)	L-483 (70) T-311 (45)

(*) L-Test on the longitudinal way.
T-Test on the transversal way.
Test Method: ISO 7322-86
NP 2372-84
CLASSIFICATION:ISO 4714-86
NP 3004-88 Class A



Part #	Thickness	Roll Length
RC-250	6mm (1/4")	100 lin. ft. (400 sq. ft.)

ANAGLYPTA® WALL COVERINGS & BORDERS

Add texture and interest to bring an exciting, unique look into any room with our new Anaglypta® Wall Coverings, Borders and Dados. These highly embossed, extraordinarily durable coverings hide your old, uneven or otherwise unsightly walls and ceilings with a supremely versatile surface. Virtually indestructible, our new wall coverings and borders respond magnificently to a wide variety of different decorative techniques including painting, marbleizing, scumbling and glazing. The truly classical designs and physical endurance is matched only by its aesthetic longevity and ease of installation.

ANAGLYPTA® SUPADURABLE

20-1/2" High x 33 Ft. Long Rolls

Anaglypta® Supadurable has a deep, pronounced emboss with great resilience to heavy wear. The toughness of the relief makes it suitable for high traffic areas, such as hallways and stairways, public places or wherever good looks and low maintenance are a high priority. The inherent qualities are due to the combination of virgin pulp, from managed forests, mixed with cotton fibers making it a natural product. All are suitable for walls and many of designs can be used on ceilings in keeping with the Victorian Style.



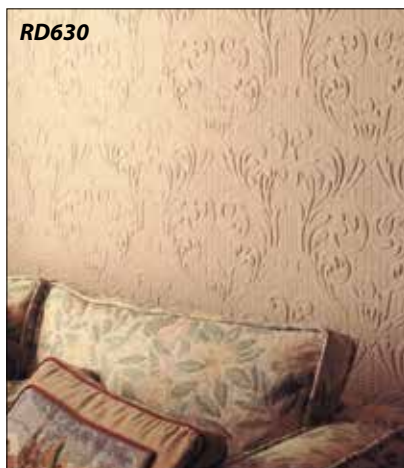
RD151 Spencer
Design Repeat: 4"



RD630 Charles
Design Repeat: 10-1/2"



RD655 Seymour
Design Repeat: 10-1/2"



RD630



RD151

ANAGLYPTA® LUXURY VINYL WALL COVERINGS

20-1/2 In. High x 33 Ft. Long Rolls

Combines a warm, tough and luxurious appearance. Anaglypta® Luxury Vinyl is washable when painted with latex semigloss which also highlights the relief in the design. Its modern manufacturing method also stops the emboss from becoming permanently crushed during hanging or use. Being flat backed, it is easy to hang on ceilings & walls.



RD750 Louisa
Design Repeat: 25-1/4"



RD803 Wildacre
Design Repeat: 12-5/8"



RD80000 Turner Tile
Design Repeat: 8-1/2"



RD80027 High Trad
Design Repeat: 25-1/4"



RD80028 Folder Paper
Design Repeat: 25-1/4"

ANAGLYPTA® ORIGINAL

20-1/2" High x 33 Ft. Long Rolls

Anaglypta® Original remains unsurpassed, still made in the traditional manner by bonding two pieces of paper together. Only now, it is made from recycled paper and a quantity of virgin pulp, from managed forests, to give it strength. Easy to handle, hard-wearing and versatile, Anaglypta Original is suitable for walls and ceilings. There are many different patterns and styles to choose from; some dating back to the early twentieth century.



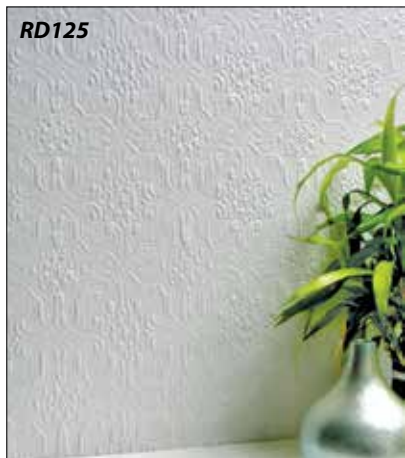
RD124 Derby
Design Repeat: 3-1/2"



RD125 Berkeley
Design Repeat: 5-1/2"



RD340 Townsend
Design Repeat: 3-1/2"



RD341 Portland
Design Repeat: 10-1/2"



RD392 Tudor
Design Repeat: 2"

**REMOVABLE
& MOVABLE**

PEEL & STICK WALLPAPER

3500/PC
In Minutes
In Seconds!

Printed on a premium substrate that is completely removable and will not damage walls, this new peel and stick solution saves you both the time and money of ordinary wallpaper. Simply peel and stick to create a gorgeous look on any smooth, flat surface. Easily design a glamorous living room feature wall or makeover your bedroom instantly with our variety of fashionable designs. If you love the look of wallpaper but without the commitment, then this peel and stick wallpaper is for you!

20.5" x 18 Ft. Long Rolls

PSWP-01



PSWP-02



PSWP-03



PSWP-04



NEW ENGLAND CLASSIC® RAISED PANEL WAINSCOTING

CLASSIC TRADITIONAL™ RAISED PANEL

Available Primed White or Unfinished Oak Veneer



New England Classic's® Classic Traditional™ raised panel wainscoting brings back the warmth and beauty of fine wood interiors. The system is designed using components that complement each other to provide high quality, fully coordinated interior solutions. The panels are 9", 12", 15" 18" and 23" wide by 23" high. The stiles are 3" wide by 23" high. Combined with different railing systems you can achieve overall heights of 32" and 36". System consists of an engineered wood core and hardwoods and is ready to finish. Plate shelves, backbands and casings are available to accent and neatly finish your job. In addition to the above panels, stiles and rail kits, 6" x 23" panels and 10" x 23" end stiles are also available for meeting the in-between sizes. All mouldings are sold in 8 foot lengths only and the 4" and 8" rail kits can not be broken up for individual component sale.

BENEFITS INCLUDE:

- The look and feel of custom millwork at an affordable price.
- Installs quickly and easily with minimum job site customizing.
- Complete set of installation instructions included with every order.
- Nailing grooves assure proper nailing locations and conceal most nail holes.
- Design minimizes the need for complex coping of joints.
- Veneered panel construction minimizes seasonal shrinkage, splitting and twisting.
- Ready to paint or stain.
- We can help design your layout and estimate your material needs. All you need to do is fill out our design layout sheet and we can provide a detailed drawing and material list.

PANEL PACKS

SOLD IN FULL BOXED QUANTITIES ONLY

Part

NRPS-P6-* (4 x 6" Panels) (No Stiles)

NRPS-P9-* (4 x 9" Panels) (4 x 3" Stiles)

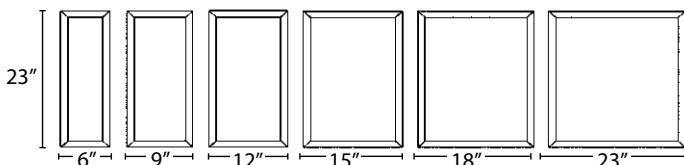
NRPS-P12-* (4 x 12" Panels) (4 x 3" Stiles)

NRPS-P15-* (4 x 15" Panels) (4 x 3" Stiles)

NRPS-P18-* (4 x 18" Panels) (4 x 3" Stiles)

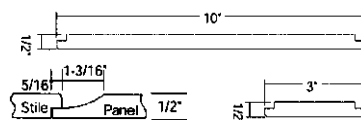
NRPS-P23-* (4 x 23" Panels) (4 x 3" Stiles)

6" Panel sets do not include center stiles.



THE STILES

3" stiles are used between each panel. 10" stiles are used at ends and trimmed to fit.



Stile Size (Width x Height)

Part

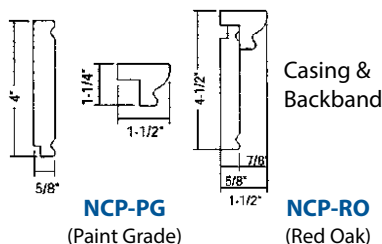
3" x 23" **NS3X23-***

10" x 23" **NS10X23-***

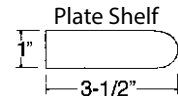


CASING PACK

Includes: 3 x 8' Lengths of 4" Casing,
3 x 8' Lengths of backband.



THE ACCESSORIES



Moulding Type
(8 ft. Lengths)
Plate Shelf

Part

NP96-*

THE RAIL KITS

Kit Includes: 1 shoe rail, 1 bottom rail (4" or 8"), 1 top rail and 1 cap rail - 8 ft. each.

Bottom Rail Height/ Overall Height

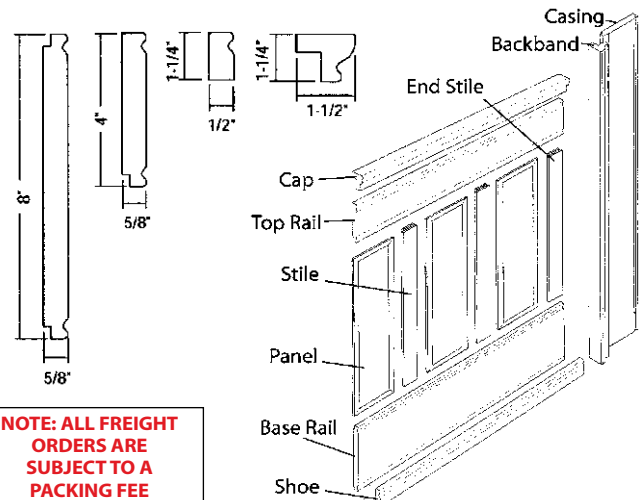
Part

4" Kit/32" O.A. Height

NRK4X96-*

8" Kit/36" O.A. Height

NRK8X96-*



NOTE: ALL FREIGHT ORDERS ARE SUBJECT TO A PACKING FEE



INTERLOCKING BEADED WAINSCOTING COMPLETE 8 FT. KIT

MATERIAL: POLYSTYRENE

Wainscoting is a quick & simple way to enrich and enhance any room decor

MUST BE PAINTED FOR A UNIFORM FINISH

KIT INCLUDES:

- 

CAP
(1) 8' Length
1-3/4" Wide x 1" Projection
- 


INTERLOCKING BEADED PANEL
(19) pcs. of
31-7/8" Lengths
5-1/4" Wide x 3/8" Thick
- 

UNIVERSAL BASE
(1) 8' Length
4" Wide x 5/8" Thick
- 

SHOE
(1) 8' Length &
(1) 3' Length (for 90° corners)
11/16" High x 7/16" Projection

Each Wainscoting Kit will cover an 8' wide x 36" high area.



WC-KIT-07
(Egg Shell White) Paintable 



MP-25-ADH
The "Original" Hybrid Formula

MP-25-ADH is a high performance, one component, permanently flexible, easy to use, multi-purpose fast cure modified acrylic latex sealant. MP-25-ADH cures rapidly when exposed to atmospheric moisture to form a durable bond.

- Use as adhesive or filler.
- Eco-friendly, low VOC's.
- Fast cure.
- Paintable.
- Non-yellowing.

MP-25-ADH

CAULK-GUN

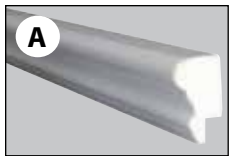


INTERLOCKING BEADED WAINSCOTING WAINSCOTING COMPONENTS

MATERIAL: POLYSTYRENE • FINISH: WHITE • 8 FT. LENGTHS

- High impact
- Economical
- Finished & ready to install
- Moisture resistant
- Endless applications
- For indoor application only

MUST BE PAINTED FOR A UNIFORM FINISH



A CAP
1-3/4" Wide
x 1" Projection
x 8' Length

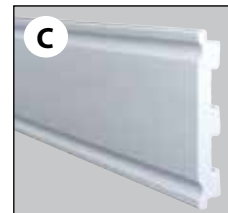
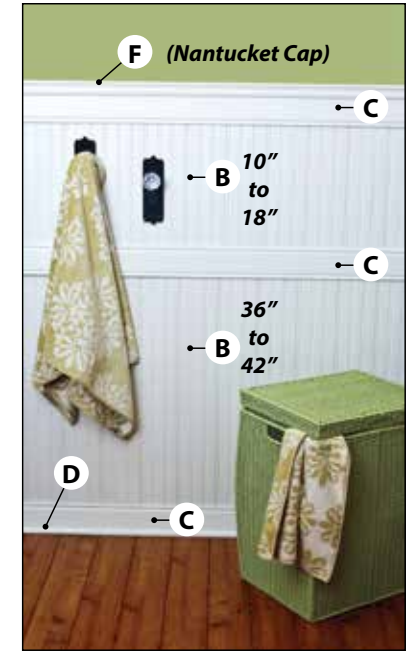
Part # **Finish**
RPS-0491-07 White



B INTERLOCKING BEADED PANEL
5-1/4" Wide
x 3/8" Thick
x 8' Length



Part # **Finish**
WC-518-07 White



C UNIVERSAL BASE
4" Wide
x 5/8" Thick
x 8' Length

Part # **Finish**
UNI-BASE-07 White



D SHOE
11/16" High
x 7/16" Projection
x 8' Length

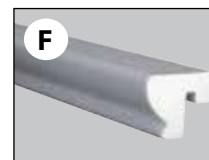
Part # **Finish**
RPS-0127-07 White

CAPS (optional)



E 2-5/8" Wide
x 1" High
x 8' Length

Part # **Finish**
RPS-0492-07 White



F 1-1/4" Wide
x 1-1/2" High
x 8' Length

RPS-0493-07 cap works only with our Universal Base or with 1/2" board.

Part # **Finish**
RPS-0493-07 White



MP-25-ADH
The "Original" Hybrid Formula

MP-25-ADH is a high performance, one component, permanently flexible, easy to use, multi-purpose fast cure modified acrylic latex sealant. MP-25-ADH cures rapidly when exposed to atmospheric moisture to form a durable bond.

- Use as adhesive or filler.
- Eco-friendly, low VOC's.
- Fast cure.
- Paintable.
- Non-yellowing.

MP-25-ADH
CAULK-GUN



INTERLOCKING BEADED WAINSCOTING

MATERIAL: POLYSTYRENE

Use these components to achieve a Nantucket Look...

You choose the height of your wainscoting

Use on:
Ceilings, Walls, Stairs,
Bathrooms, Dens, Hallways...

**Interior
 Use Only**



MP-25-ADH
 The "Original" Hybrid Formula

MP-25-ADH is a high performance, one component, permanently flexible, easy to use, multi-purpose fast cure modified acrylic latex sealant. MP-25-ADH cures rapidly when exposed to atmospheric moisture to form a durable bond.

- Use as adhesive or filler.
- Eco-friendly, low VOC's.
- Fast cure.
- Paintable.
- Non-yellowing.

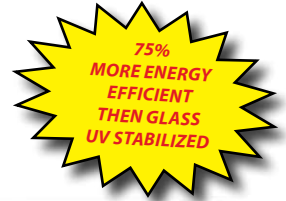
MP-25-ADH
 CAULK-GUN



See page O-33~34 for more Plastic Panels

LOOSE COMPONENTS

BLOCK PATTERNS	BLOCK SIZE	BLOCK THICKNESS
Classic Wave (clear)	6" x 6" or 8" x 8"	2" or 3"
Classic Glacier (wave only)		
Classic Cross Ribbed Alternating (clear)		



CLASSIC WAVE
AB62-CL
AB63-CL
AB82-CL
AB83-CL



CLASSIC CROSS RIBBED ALTERNATING
ABRP62-CL
ABRP63-CL
ABRP82-CL
ABRP83-CL



CLASSIC FROSTED GLACIER
ABFR62-CL
ABFR63-CL
ABFR82-CL
ABFR83-CL

Frosted on one side only

Block Accessories

not included

T-BAR

FOR FRAMING/MOUNTING ACRYLIC BLOCKS



Ctn. Quantity -10 pcs

COLOR - WHITE
MATERIAL - PVC
LENGTH - 5 Ft. long
 3-1/2" wide
 1/4" high

T-BAR



CLIPS



1 pack of clips are required for every 6 blocks.
MINIMUM
 12 pcs. per pack

AB-CLIP



Hy-Lite® Acrylic Blocks are 70% lighter than glass.

Multiple patterns allow you to choose a block style that complements your special interior design concept.



LOOSE COMPONENTS

Acrylic blocks snap together with ease. No clips required.



BLOCK PATTERNS	BLOCK SIZE	BLOCK THICKNESS
Design Wave (clear)	6" x 6",	1-1/2" or
Design Glacier (clear one side, frosted other side)	8" x 8", or	3"
Design Heritage Wave (green)	9" x 9"	
Column Ribbed (clear)		

With our Acrylic Blocks, you can create windows of elegance, room dividers, side lights & stairwell accents.

From providing light & architectural style in today's kitchens & baths, to creating focal points & privacy in outdoor spas & pool areas. The applications are endless.

DESIGN WAVE



- Clear wave pattern provides obscurity

Part #	Size
LCB-66-CW	6" x 6" x 1-1/2"
LCB-88-CW	8" x 8" x 1-1/2"
LCB-883-CW	8" x 8" x 3"
LCB-99-CW	9" x 9" x 1-1/2"

DESIGN GLACIER



- Clear pattern on one side, frosted on other side for maximum privacy

Part #	Size
LCB-66-GF	6" x 6" x 1-1/2"
LCB-88-GF	8" x 8" x 1-1/2"
LCB-883-GF	8" x 8" x 3"
LCB-99-GF	9" x 9" x 1-1/2"

COLUMN RIBBED



- Ribbed pattern
- Cross ribbed alternating sides

Part #	Size
LCB-66-CRA	6" x 6" x 1-1/2"
LCB-88-CRA	8" x 8" x 1-1/2"

plank it

WALLSCAPES



Actual Cast Pieces From Old Barn Wood
Over 100 Different Moulds
No Two Planks are Alike!
Just As No Two Trees Look Alike



Introducing Our Latest Addition: Plank It Wallscapes (*Urethane Composite*)

For use in interior settings, both residential and commercial (*Class "A" Fire Rating*)

The Plank It Advantage

They may look like genuine barn wood, but our Plank It Wallscapes have advantages over the real thing.

- **Save Time & Labor**
- **No Planing, No Sanding & No Finishing**
- **100% Useable / No Waste**
- **Plank It Wallscapes are pre-finished & ready to use**
- **Lightweight:** Easy to handle & install
- **Won't Warp, crack/check, rot or harbor insects.**
- **Easy to clean, non-toxic planks are environmentally friendly.**
- **Replicated to exacting details from actual weathered wood planks.**
- **No arsenic, lead, odor or pesticide residue.**
- **Class "A" Fire Rated**

Breathtakingly Beautiful

The authentic look & texture of reclaimed weathered wood boards creates the depth of character and sense of warmth that only wood can bring. Choose from an array of six naturally sun-weathered finishes. With close attention to detail, originality and character, these planks look every bit as unique as real wood, with a lot less hassle. What better way to bring the natural beauty and look of wood to any wall or surface of your home or business.

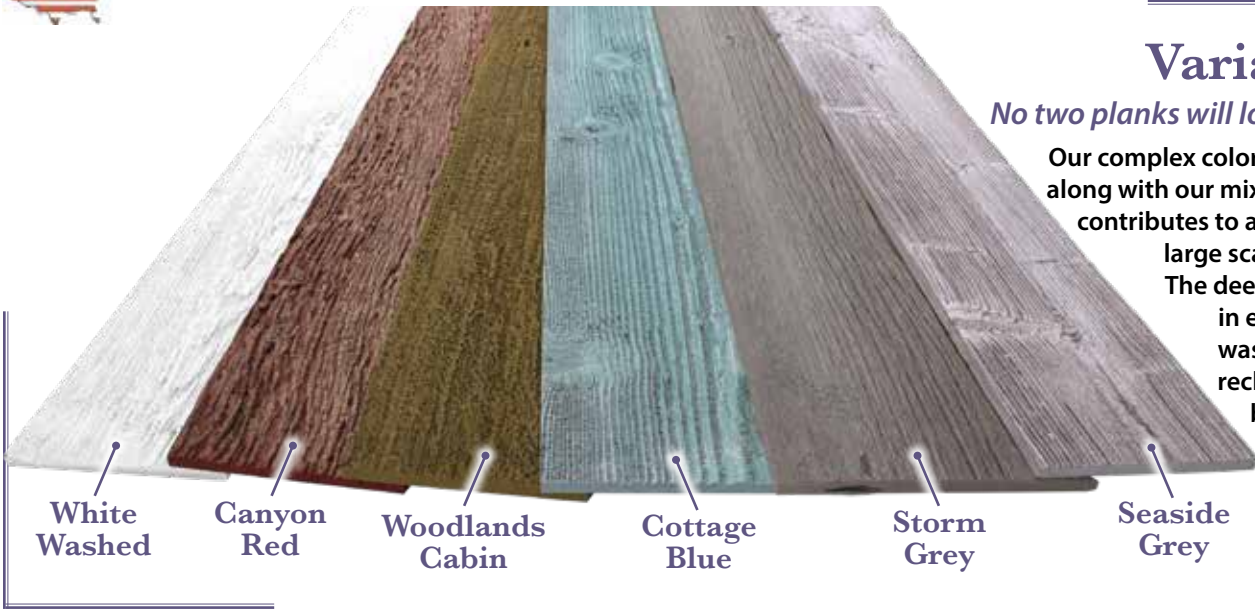


New

Smaller Planks

- 3-7/8" wide
- 10 sq. ft. per box
- Please inquire





Variation

No two planks will look alike!

Our complex color variation, along with our mixed widths contributes to a beautiful, large scale design. The deep graining in each board was cast from reclaimed old barn wood lumber.

White Washed

Canyon Red

Woodlands Cabin

Cottage Blue

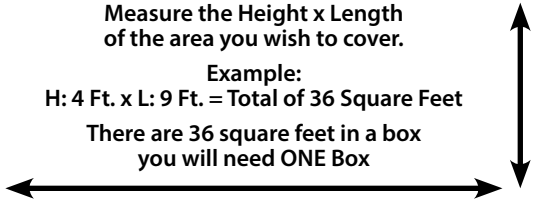
Storm Grey

Seaside Grey

How To Measure

Measure the Height x Length of the area you wish to cover.

Example:
H: 4 Ft. x L: 9 Ft. = Total of 36 Square Feet
There are 36 square feet in a box you will need ONE Box



Specifications

- Size: 6" & 8" W x 46-1/2" L x 3/8" Thick
- Material: Urethane Composite / Acrylic Finish
- UV Stabilized For Interior Use

Easy To Install

Installs at a fraction of the time, cost & labor of an actual wood installation, yet has all the benefits & appeal that only wood can bring to a space. Attaches to sheet rock, concrete, wood or brick with standard woodworking tools.

Simply mark a level line for your first row. Begin with several drops of construction adhesive & pin into place with small nails or staples. Continue to the end of the row & trim as needed. Start the next row with a staggered plank to avoid seams aligning. Trim as needed around outlets and switches. This process will continue until you have completed the project. We recommend F26, PL Premium or equivalent adhesive for best results.

[Visit Web To View Installation Video](#)





WHITE WASHED

Plank It Wallscapes collection gives you the beautifully random character of real barn wood. Our planks are quickly being recognized as the most realistic reproduction on the market.

Full Box

PLANKIT-WW

16 pc. per box (Approx. 36 sq. ft.)
(8) 6" W & (8) 8" W x 46-1/2" L x 3/8" Thick

Half Box

PLANKIT-WW-8

8 pc. per box (Approx. 18 sq. ft.)
(4) 6" W & (4) 8" W x 46-1/2" L x 3/8" Thick

Minimum Order 1 Carton. No Broken Boxes.

Sample Chain PLANKIT-WW-SAMP

3 Pcs. Variation Color/Graining
2-5/8" x 10"
Refunded within 90 days of purchase



Variation

Our sun weathered planks naturally created the perfect color palette in harmony with each other. No two planks will look alike in color or graining.



The Deep Graining In Each Board Was Cast From Reclaimed Old Barn Wood Lumber.



New!

Smaller Planks

- 3-7/8" wide
- 10 sq. ft. per box
- Please inquire



- **Material:** Urethane Composite / Acrylic Finish
- **UV Stabilized For Interior Use**
- **Lightweight:** Easy to handle & install
- **Attaches to sheet rock, concrete, wood or brick with standard woodworking tools.**
- **Create a feature wall or do an entire room.**
- **Won't warp, crack/check, rot or harbor insects**
- **Easy to clean, non-toxic planks are environmentally friendly.**
- **Add value, interest and current style to any space.**
- **Replicated to exacting details from actual weathered wood planks.**
- **No arsenic, lead, odors or pesticide residue.**
- **Class "A" Fire Rated**



CANYON RED

Plank It Wallscapes collection gives you the beautifully random character of real barn wood. Our planks are quickly being recognized as the most realistic reproduction on the market.

Full Box

PLANKIT-CR

16 pc. per box (Approx. 36 sq. ft.)
(8) 6" W & (8) 8" W x 46-1/2" L x 3/8" Thick

Half Box

PLANKIT-CR-8

8 pc. per box (Approx. 18 sq. ft.)
(4) 6" W & (4) 8" W x 46-1/2" L x 3/8" Thick

Minimum Order 1 Carton. No Broken Boxes.

Sample Chain

PLANKIT-CR-SAMP

3 Pcs. Variation Color/Graining
2-5/8" x 10"
Refunded within 90 days of purchase

Variation

Our sun weathered planks naturally created the perfect color palette in harmony with each other. No two planks will look alike in color or graining.



The Deep Graining In Each Board Was Cast From Reclaimed Old Barn Wood Lumber.





bar restaurant

- Material: Urethane Composite / Acrylic Finish
- UV Stabilized For Interior Use
- Lightweight: Easy to handle & install
- Attaches to sheet rock, concrete, wood or brick with standard woodworking tools.
- Create a feature wall or do an entire room.
- Won't warp, crack/check, rot or harbor insects
- Easy to clean, non-toxic planks are environmentally friendly.
- Add value, interest and current style to any space.
- Replicated to exacting details from actual weathered wood planks.
- No arsenic, lead, odors or pesticide residue.
- **Class "A" Fire Rated**





COTTAGE BLUE

Plank It Wallscapes collection gives you the beautifully random character of real barn wood. Our planks are quickly being recognized as the most realistic reproduction on the market.

Full Box

PLANKIT-CB

16 pc. per box (Approx. 36 sq. ft.)
(8) 6" W & (8) 8" W x 46-1/2" L x 3/8" Thick

Half Box

PLANKIT-CB-8

8 pc. per box (Approx. 18 sq. ft.)
(4) 6" W & (4) 8" W x 46-1/2" L x 3/8" Thick

Minimum Order 1 Carton. No Broken Boxes.

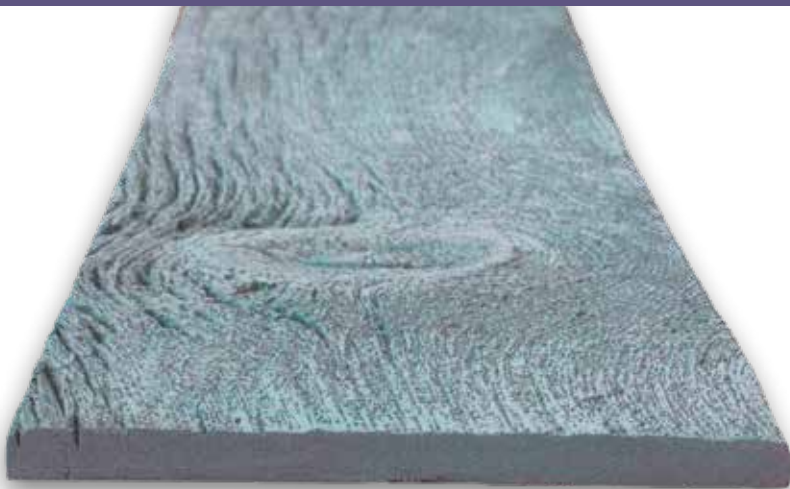
Sample Chain

PLANKIT-CB-SAMP

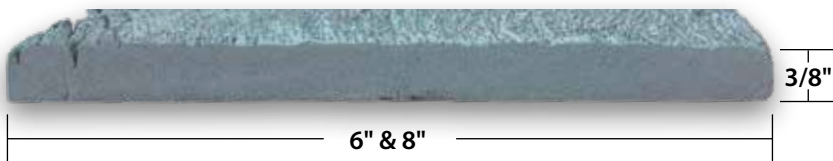
3 Pcs. Variation Color/Graining
2-5/8" x 10"
Refunded within 90 days of purchase

Variation

Our sun weathered planks naturally created the perfect color palette in harmony with each other. No two planks will look alike in color or graining.



The Deep Graining In Each Board Was Cast From Reclaimed Old Barn Wood Lumber.





- Material: Urethane Composite / Acrylic Finish
- UV Stabilized For Interior Use
- Lightweight: Easy to handle & install
- Attaches to sheet rock, concrete, wood or brick with standard woodworking tools.
- Create a feature wall or do an entire room.
- Won't warp, crack/check, rot or harbor insects
- Easy to clean, non-toxic planks are environmentally friendly.
- Add value, interest and current style to any space.
- Replicated to exacting details from actual weathered wood planks.
- No arsenic, lead, odors or pesticide residue.
- **Class "A" Fire Rated**



STORM GREY

Plank It Wallscapes collection gives you the beautifully random character of real barn wood. Our planks are quickly being recognized as the most realistic reproduction on the market.

Full Box
PLANKIT-STG

16 pc. per box (Approx. 36 sq. ft.)
(8) 6" W & (8) 8" W x 46-1/2" L x 3/8" Thick

Half Box
PLANKIT-STG-8

8 pc. per box (Approx. 18 sq. ft.)
(4) 6" W & (4) 8" W x 46-1/2" L x 3/8" Thick

Minimum Order 1 Carton. No Broken Boxes.

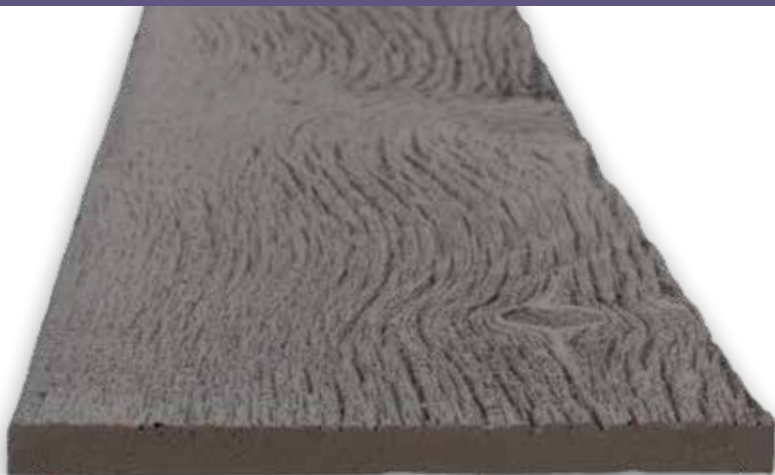
Sample Chain
PLANKIT-STG-SAMP

5 Pcs. Variation Color/Graining
2-5/8" x 10"
Refunded within 90 days of purchase



Variation

Our sun weathered planks naturally created the perfect color palette in harmony with each other. No two planks will look alike in color or graining.



The Deep Graining In Each Board Was Cast From Reclaimed Old Barn Wood Lumber.



New!

Smaller Planks

- 3-7/8" wide
- 10 sq. ft. per box
- Please inquire



- **Material: Urethane Composite / Acrylic Finish**
- **UV Stabilized For Interior Use**
- **Lightweight: Easy to handle & install**
- **Attaches to sheet rock, concrete, wood or brick with standard woodworking tools.**
- **Create a feature wall or do an entire room.**
- **Won't warp, crack/check, rot or harbor insects**
- **Easy to clean, non-toxic planks are environmentally friendly.**
- **Add value, interest and current style to any space.**
- **Replicated to exacting details from actual weathered wood planks.**
- **No arsenic, lead, odors or pesticide residue.**
- **Class "A" Fire Rated**



WOODLANDS CABIN

Plank It Wallscapes collection gives you the beautifully random character of real barn wood. Our planks are quickly being recognized as the most realistic reproduction on the market.

Full Box

PLANKIT-WC

16 pc. per box (Approx. 36 sq. ft.)
(8) 6" W & (8) 8" W x 46-1/2" L x 3/8" Thick

Half Box

PLANKIT-WC-8

8 pc. per box (Approx. 18 sq. ft.)
(4) 6" W & (4) 8" W x 46-1/2" L x 3/8" Thick

Minimum Order 1 Carton. No Broken Boxes.

Sample Chain PLANKIT-WC-SAMP

5 Pcs. Variation Color/Graining
2-5/8" x 10"
Refunded within 90 days of purchase

Variation

Our sun weathered planks naturally created the perfect color palette in harmony with each other. No two planks will look alike in color or graining.



The Deep Graining In Each Board Was Cast From Reclaimed Old Barn Wood Lumber.



3/8"

6" & 8"





- **Material:** Urethane Composite / Acrylic Finish
- **UV Stabilized For Interior Use**
- **Lightweight:** Easy to handle & install
- **Attaches to sheet rock, concrete, wood or brick with standard woodworking tools.**
- **Create a feature wall or do an entire room.**
- **Won't warp, crack/check, rot or harbor insects**
- **Easy to clean, non-toxic planks are environmentally friendly.**
- **Add value, interest and current style to any space.**
- **Replicated to exacting details from actual weathered wood planks.**
- **No arsenic, lead, odors or pesticide residue.**
- **Class "A" Fire Rated**



SEASIDE GREY

Plank It Wallscapes collection gives you the beautifully random character of real barn wood. Our planks are quickly being recognized as the most realistic reproduction on the market.

Full Box
PLANKIT-SEG

16 pc. per box (Approx. 36 sq. ft.)
(8) 6" W & (8) 8" W x 46-1/2" L x 3/8" Thick

Half Box
PLANKIT-SEG-8

8 pc. per box (Approx. 18 sq. ft.)
(4) 6" W & (4) 8" W x 46-1/2" L x 3/8" Thick

Minimum Order 1 Carton. No Broken Boxes.

Sample Chain
PLANKIT-SEG-SAMP

3 Pcs. Variation Color/Graining
2-5/8" x 10"
Refunded within 90 days of purchase

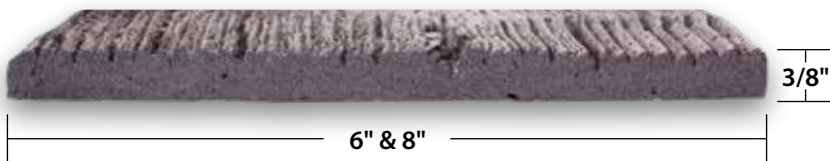


Variation

Our sun weathered planks naturally created the perfect color palette in harmony with each other. No two planks will look alike in color or graining.



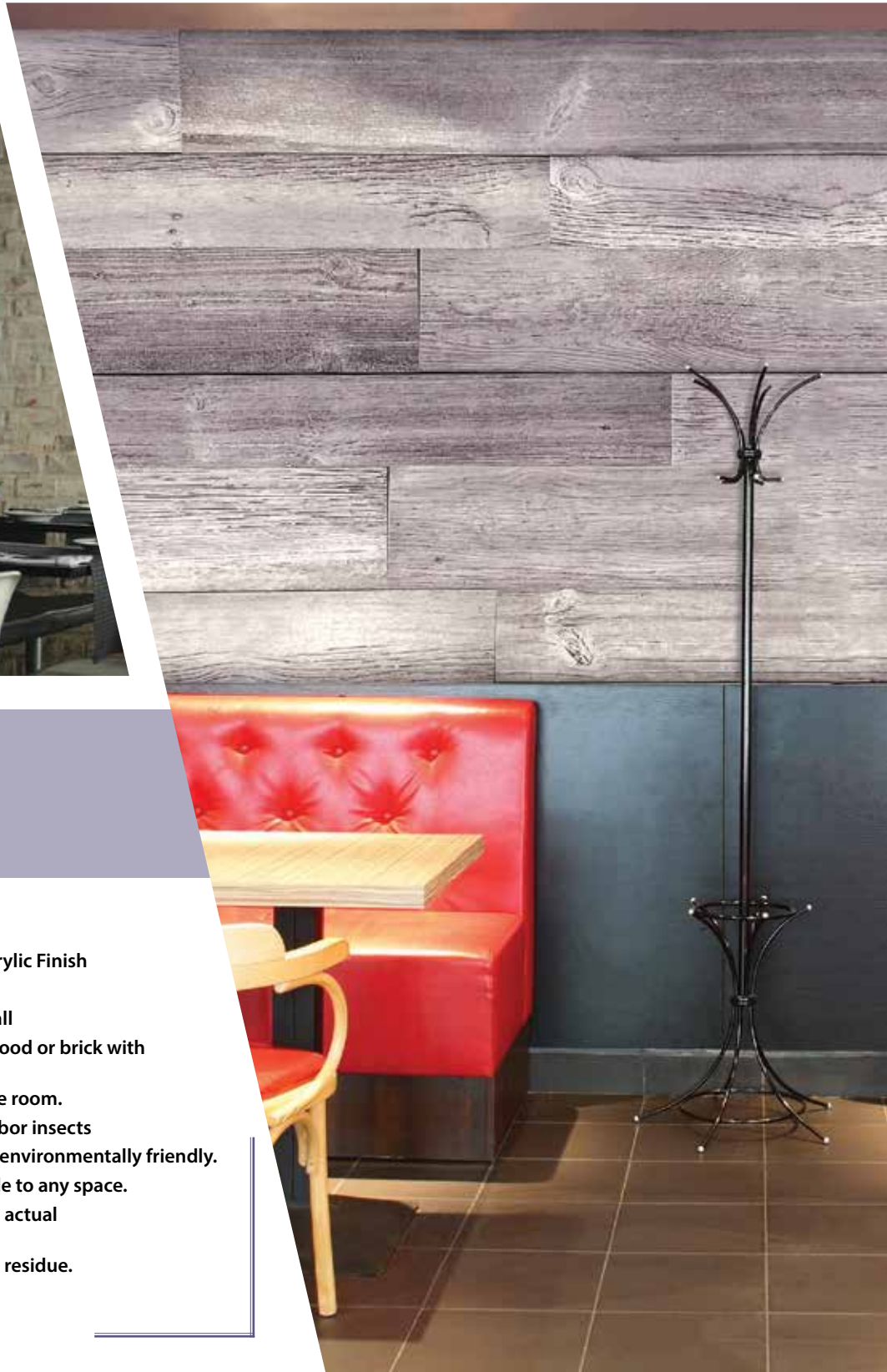
The Deep Graining In Each Board Was Cast From Reclaimed Old Barn Wood Lumber.



New!

Smaller Planks

- 3-7/8" wide
- 10 sq. ft. per box
- Please inquire



- **Material:** Urethane Composite / Acrylic Finish
- **UV Stabilized For Interior Use**
- **Lightweight:** Easy to handle & install
- **Attaches to sheet rock, concrete, wood or brick with standard woodworking tools.**
- **Create a feature wall or do an entire room.**
- **Won't warp, crack/check, rot or harbor insects**
- **Easy to clean, non-toxic planks are environmentally friendly.**
- **Add value, interest and current style to any space.**
- **Replicated to exacting details from actual weathered wood planks.**
- **No arsenic, lead, odors or pesticide residue.**
- **Class "A" Fire Rated**

WOOD WALLSCAPES

*Pine Planks
With Peel & Stick Adhesive*



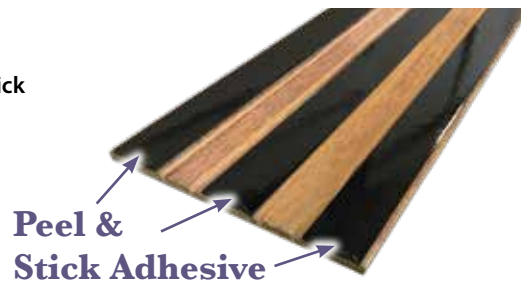
Why Choose Wood Wallscapes?

Create a stunning accent wall with modern rustic charm surrounding yourself with the rich warmth of natural wood. Our wood wallscapes can quickly & easily transform the look and feel of a room. Harvested from sustainable pine forests, our panels have a clean, minimalist appeal with natural wood texture & characteristics. Available in 9 inviting finishes, choose one finish or mix and match for added depth & charm.

Three strong peel and stick adhesive strips eliminate the need for messy glues or nails, making installation quick, simple and DIY friendly. Bring the beauty of nature to your interior spaces with the natural warmth, texture and comfort that only wood creates.

Specifications

- Size: 5-1/8" W x 46-1/2" L x 3/16" Thick
- Material: Pine Planks
- Peel & Stick Adhesive



**Design Your
Own Wall**

Drag & Drop Planks To
Create Your Own Unique Look

Go To:

www.woodwallscapes.com/app

- Size: 5-1/8" W x 46-1/2" L x 3/16" Thick
- Material: Pine Planks
- Natural Wood Texture Surface
- 9 Authentic Finishes

- A striking accent to any room.
- Modern Style with Timeless Appeal
- Mix and combine finishes to create your own design.

- Effortless cutting and installation
- 3 durable 1" strips of peel & stick foam adhesive.
- Enhance your Walls, Ceiling, Doors and More!

BEACHWOOD WHITE



J-ROLLER

3" x 1-1/2" Rubber J-Roller
2 Vinyl Rib Heavy Duty Grips
**MUST USE J-ROLLER
FOR INSTALLATION**

WWS-BW



NATURAL SPRUCE



WWS-NS

- Size: 5-1/8" W x 46-1/2" L x 3/16" Thick
- Material: Pine Planks
- Natural Wood Texture Surface
- 9 Authentic Finishes

- A striking accent to any room.
- Modern Style with Timeless Appeal
- Mix and combine finishes to create your own design.

- Effortless cutting and installation
- 3 durable 1" strips of peel & stick foam adhesive.
- Enhance your Walls, Ceiling, Doors and More!

DRIFTWOOD GREY



J-ROLLER

3" x 1-1/2" Rubber J-Roller
2 Vinyl Rib Heavy Duty Grips
**MUST USE J-ROLLER
FOR INSTALLATION**

WWS-DG

DRIFTWOOD LIGHT GREY



WWS-DLG

- Size: 5-1/8" W x 46-1/2" L x 3/16" Thick
- Material: Pine Planks
- Natural Wood Texture Surface
- 9 Authentic Finishes

- A striking accent to any room.
- Modern Style with Timeless Appeal
- Mix and combine finishes to create your own design.

- Effortless cutting and installation
- 3 durable 1" strips of peel & stick foam adhesive.
- Enhance your Walls, Ceiling, Doors and More!

MISSION BROWN



J-ROLLER

3" x 1-1/2" Rubber J-Roller
2 Vinyl Rib Heavy Duty Grips
**MUST USE J-ROLLER
FOR INSTALLATION**

WWS-MB

NATURAL TAN



WWS-NT

- Size: 5-1/8" W x 46-1/2" L x 3/16" Thick
- Material: Pine Planks
- Natural Wood Texture Surface
- 9 Authentic Finishes

- A striking accent to any room.
- Modern Style with Timeless Appeal
- Mix and combine finishes to create your own design.

- Effortless cutting and installation
- 3 durable 1" strips of peel & stick foam adhesive.
- Enhance your Walls, Ceiling, Doors and More!

AMBER



J-ROLLER

3" x 1-1/2" Rubber J-Roller
2 Vinyl Rib Heavy Duty Grips
**MUST USE J-ROLLER
FOR INSTALLATION**

WWS-AM

ROCKY RIDGE RED



WWS-RR

- Size: 5-1/8" W x 46-1/2" L x 3/16" Thick
- Material: Pine Planks
- Natural Wood Texture Surface
- 9 Authentic Finishes

- A striking accent to any room.
- Modern Style with Timeless Appeal
- Mix and combine finishes to create your own design.

- Effortless cutting and installation
- 3 durable 1" strips of peel & stick foam adhesive.
- Enhance your Walls, Ceiling, Doors and More!

ESPRESSO BROWN



J-ROLLER

3" x 1-1/2" Rubber J-Roller
2 Vinyl Rib Heavy Duty Grips
**MUST USE J-ROLLER
FOR INSTALLATION**

WWS-ES

EBONY



WWS-EB

- Size: 5-1/8" W x 46-1/2" L x 3/16" Thick
- Material: Pine Planks
- Natural Wood Texture Surface
- 9 Authentic Finishes

- A striking accent to any room.
- Modern Style with Timeless Appeal
- Mix and combine finishes to create your own design.

- Effortless cutting and installation
- 3 durable 1" strips of peel & stick foam adhesive.
- Enhance your Walls, Ceiling, Doors and More!

MIX & MATCH COLORS

Design Your Own Wall

Drag & Drop Planks To
Create Your Own Unique Look

Go To:

www.woodwallscapes.com/app



J-ROLLER

3" x 1-1/2" Rubber J-Roller
2 Vinyl Rib Heavy Duty Grips

**MUST USE J-ROLLER
FOR INSTALLATION**



Shown With:
Amber, Driftwood Light Grey, Ebony,
Espresso Brown & Mission Brown



Shown: Beachwood White



Shown: Ebony



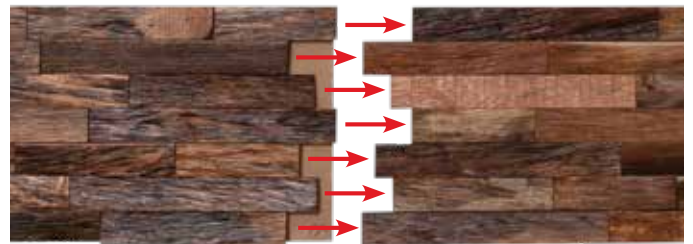
Shown In: Natural (Mahogany)



3D WOOD WALLSCAPES

Surround yourself with the warmth of natural wood with a stunning accent wall or 3 dimensional wood wallscape. When used on multiple walls, the 3D Wallscapes can quickly and easily transform the design of any room. Harvested from sustainable forests, our panels have a clean, minimalist appeal with natural wood texture & characteristics. Available in 4 warm & inviting finishes, choose one finish for a calming, unified effect; adding depth & charm. Installation is quick, simple and DIY friendly. Bring the calming beauty of nature to your interior spaces with the natural warmth, texture and comfort that only wood creates.

Interlocking Panel Connection



23-5/8" W 7-7/8" H x 3/4" Thick Plank



Natural (Mahogany)

WWS3D-NATURAL

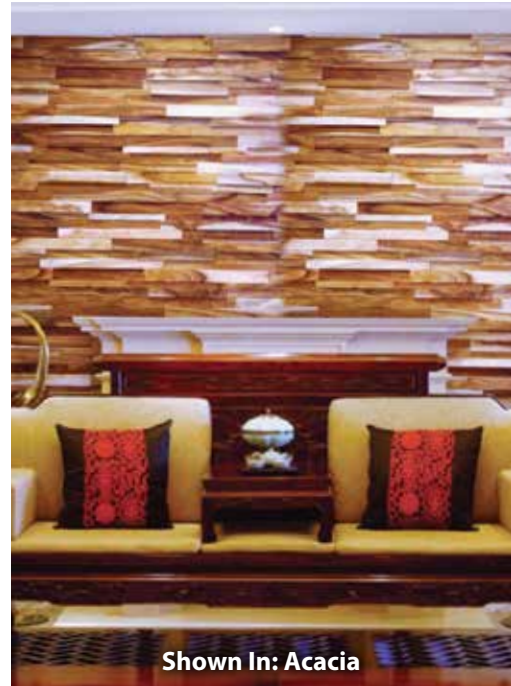
- Natural Solid Hardwood interlocking wall planks
- 4 Species: Oak, Acacia, Walnut and Mahogany
- High quality smooth stained finish
- Dimensional raised, textured design
- Create a serene inviting space
- Modern style and Classic charm
- Use in a Residential or Commercial setting
- Easy installation



Shown In: Oak

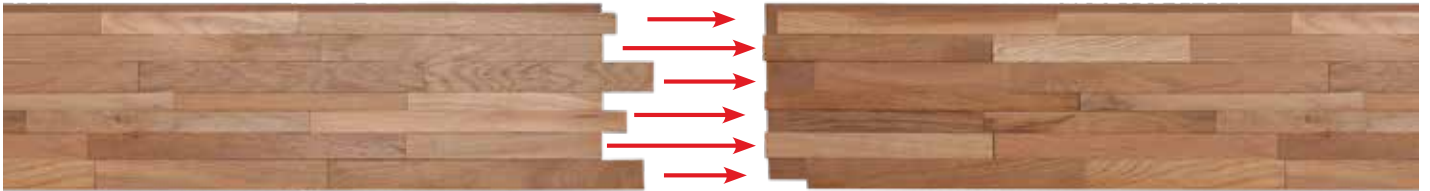


Shown In: Black Walnut



Shown In: Acacia

Interlocking Panel Connection



47-1/4" W 7-7/8" H x 1/2" Thick Planks



Black Walnut
WWS3D-BKWAL



Oak
WWS3D-OAK



Acacia
WWS3D-ACACIA